

THY1 Antibody

Catalog No: #37275

Orders: order@signalwayantibody.comSupport: tech@signalwayantibody.com

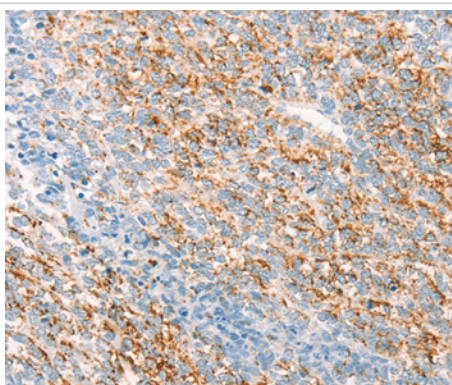
Description

Product Name	THY1 Antibody
Host Species	Rabbit
Clonality	Polyclonal
Purification	Antigen affinity purification.
Applications	IHC
Species Reactivity	Hu Ms Rt
Specificity	The antibody detects endogenous levels of total THY1 protein.
Immunogen Type	Peptide
Immunogen Description	Synthetic peptide corresponding to a region derived from internal residues of human Thy-1 cell surface antigen
Target Name	THY1
Other Names	CD90
Accession No.	Swiss-Prot#: P04216NCBI Gene ID: 7070Gene Accssion: NP_006279
Uniprot	P04216
GeneID	7070;
Concentration	0.8mg/ml
Formulation	Rabbit IgG in pH7.4 PBS, 0.05% NaN ₃ , 40% Glycerol.
Storage	Store at -20°C

Application Details

Immunohistochemistry: 1:25-1:100

Images



Immunohistochemical analysis of paraffin-embedded Human ovarian cancer tissue using #37275 at dilution 1/25.

Background

Thy-1 or CD90(Cluster of Differentiation 90) is a 25¨C37 kDa heavily N-glycosylated, glycoposphatidylinositol(GPI) anchored conserved cell surface protein with a single V-like immunoglobulin domain, originally discovered as a thymocyte antigen. Thy-1 can be used as a marker for a variety

of stem cells and for the axonal processes of mature neurons. Structural study of Thy-1 lead to the foundation of the Immunoglobulin superfamily, of which it is the smallest member, and led to some of the initial biochemical description and characterization of a vertebrate GPI anchor and also the first demonstration of tissue specific differential glycosylation.

Note: This product is for in vitro research use only