

PTMA Antibody

Catalog No: #37277

Orders: order@signalwayantibody.comSupport: tech@signalwayantibody.com

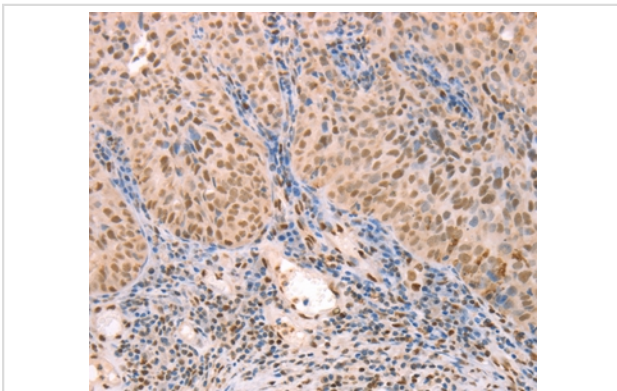
Description

Product Name	PTMA Antibody
Host Species	Rabbit
Clonality	Polyclonal
Purification	Antigen affinity purification.
Applications	IHC
Species Reactivity	Hu Ms Rt
Specificity	The antibody detects endogenous levels of total PTMA protein.
Immunogen Type	Peptide
Immunogen Description	Synthetic peptide corresponding to residues near the N terminal of human prothymosin, alpha
Target Name	PTMA
Other Names	TMSA
Accession No.	Swiss-Prot#: P06454NCBI Gene ID: 5757Gene Accssion: NP_001092755
Uniprot	P06454
GeneID	5757;
Concentration	0.9mg/ml
Formulation	Rabbit IgG in pH7.4 PBS, 0.05% NaN ₃ , 40% Glycerol.
Storage	Store at -20°C

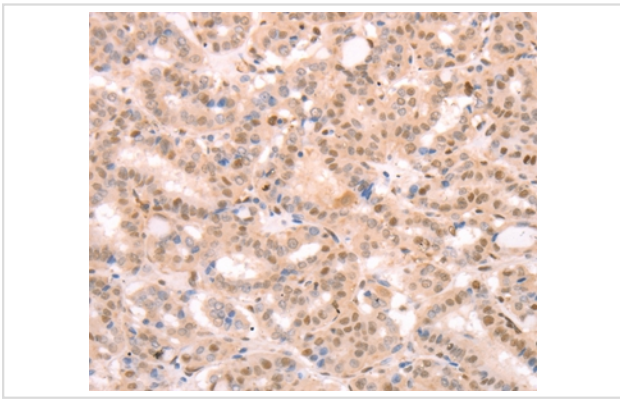
Application Details

Immunohistochemistry: 1:25-1:100

Images



Immunohistochemical analysis of paraffin-embedded Human lymphoma tissue using #37277 at dilution 1/25.



Immunohistochemical analysis of paraffin-embedded Human thyroid cancer tissue using #37277 at dilution 1/25.

Background

Prothymosin alpha may mediate immune function by conferring resistance to certain opportunistic infections and as oncogenes contributing to cell proliferation and invasion in BC. Silencing of these gene significantly inhibited cell proliferation and invasion, and increased apoptosis in BC cells. Immunohistochemistry showed that PTMA expression levels were significantly higher in BC compared to normal bladder epithelium.

Note: This product is for in vitro research use only