

C12orf5 Antibody

Catalog No: #37280

Orders: order@signalwayantibody.comSupport: tech@signalwayantibody.com

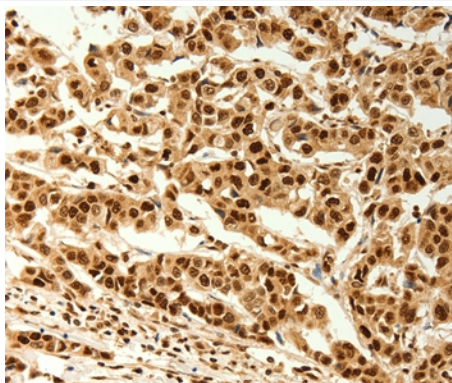
Description

Product Name	C12orf5 Antibody
Host Species	Rabbit
Clonality	Polyclonal
Purification	Antigen affinity purification.
Applications	IHC
Species Reactivity	Hu
Specificity	The antibody detects endogenous levels of total C12orf5 protein.
Immunogen Type	Peptide
Immunogen Description	Synthetic peptide corresponding to a region derived from internal residues of human chromosome 12 open reading frame 5
Target Name	C12orf5
Other Names	FR2BP; TIGAR
Accession No.	Swiss-Prot#: Q9NQ88NCBI Gene ID: 57103Gene Accssion: NP_065108
Uniprot	Q9NQ88
GeneID	57103;
Concentration	2.6mg/ml
Formulation	Rabbit IgG in pH7.4 PBS, 0.05% NaN ₃ , 40% Glycerol.
Storage	Store at -20°C

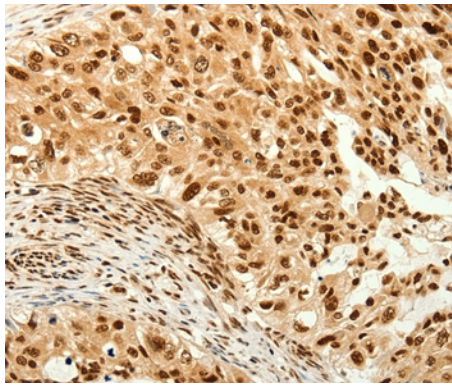
Application Details

Immunohistochemistry: 1:100-1:300

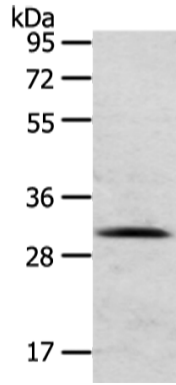
Images



Immunohistochemical analysis of paraffin-embedded Human cervical cancer tissue using #37280 at dilution 1/80.



Immunohistochemical analysis of paraffin-embedded Human breast cancer tissue using #37280 at dilution 1/80.



Rick 2017-7-5 15:19:25
Western blot analysis of Human normal liver tissue using
C12orf5 Antibody #37280

Background

This gene is regulated as part of the p53 tumor suppressor pathway and encodes a protein with sequence similarity to the bisphosphate domain of the glycolytic enzyme that degrades fructose-2,6-bisphosphate. The protein functions by blocking glycolysis and directing the pathway into the pentose phosphate shunt. Expression of this protein also protects cells from DNA damaging reactive oxygen species and provides some protection from DNA damage-induced apoptosis. The 12p13.32 region that includes this gene is paralogous to the 11q13.3 region.

Note: This product is for in vitro research use only