

GCP2 antibody

Catalog No: #22204

Orders: order@signalwayantibody.com

Support: tech@signalwayantibody.com

Description

Product Name	GCP2 antibody
Host Species	Rabbit
Clonality	Polyclonal
Purification	Purified by antigen-affinity chromatography.
Applications	WB IF
Species Reactivity	Hu
Immunogen Type	Recombinant protein
Immunogen Description	Recombinant protein fragment contain a sequence corresponding to a region within amino acids 1 and 196 of Human TUBGCP2
Target Name	GCP2
Accession No.	Swiss-Prot:Q9BSJ2Gene ID:10844
Uniprot	Q9BSJ2
GeneID	10844;
Concentration	1mg/ml
Formulation	Supplied in 0.1M Tris-buffered saline with 10% Glycerol (pH7.0). 0.01% Thimerosal was added as a preservative.
Storage	Store at -20°C for long term preservation (recommended). Store at 4°C for short term use.

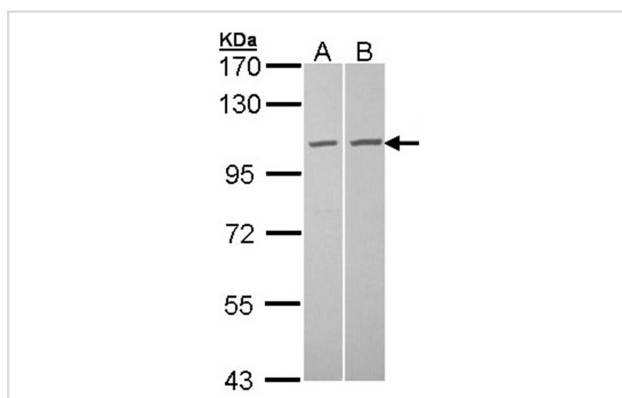
Application Details

Predicted MW: 103kd

Western blotting: 1:500-1:3000

Immunofluorescence: 1:100-1:200

Images



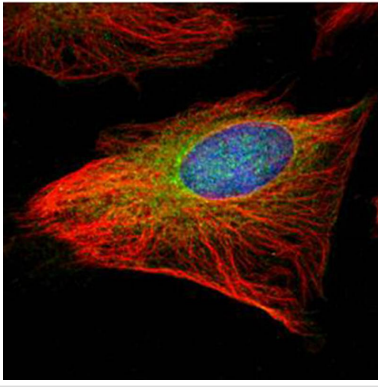
Sample (30 ug of whole cell lysate)

A: A431

B: HeLa

7.5% SDS PAGE

Primary antibody diluted at 1: 1000



Confocal immunofluorescence analysis (Olympus FV10i) of methanol-fixed HeLa, using GCP2 antibody (Green) at 1: 500 dilution and alpha-tubulin antibody (Red) at 1: 2000.

Background

Gamma-tubulin complex is necessary for microtubule nucleation at the centrosome.

Note: This product is for in vitro research use only