

Ly6a Antibody

Catalog No: #37285

Orders: order@signalwayantibody.com

Support: tech@signalwayantibody.com

Description

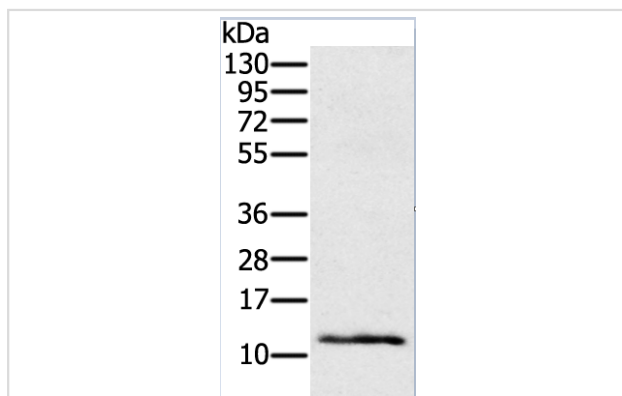
Product Name	Ly6a Antibody
Host Species	Rabbit
Clonality	Polyclonal
Purification	Antigen affinity purification.
Applications	WB IHC
Species Reactivity	Ms
Specificity	The antibody detects endogenous levels of total Ly6a protein.
Immunogen Type	Peptide
Immunogen Description	Synthetic peptide corresponding to a region derived from internal residues of mouse lymphocyte antigen 6 complex, locus A
Target Name	Ly6a
Other Names	TAP; Sca1; Sca-1; Ly-6A.2; Ly-6A/E; Ly-6E.1; Ly6
Accession No.	Swiss-Prot#: P05533NCBI Gene ID: 110454Gene Accssion: NP_034868
Uniprot	P05533
GeneID	110454;
Calculated MW	14kd
Concentration	0.6mg/ml
Formulation	Rabbit IgG in pH7.4 PBS, 0.05% NaN ₃ , 40% Glycerol.
Storage	Store at -20°C

Application Details

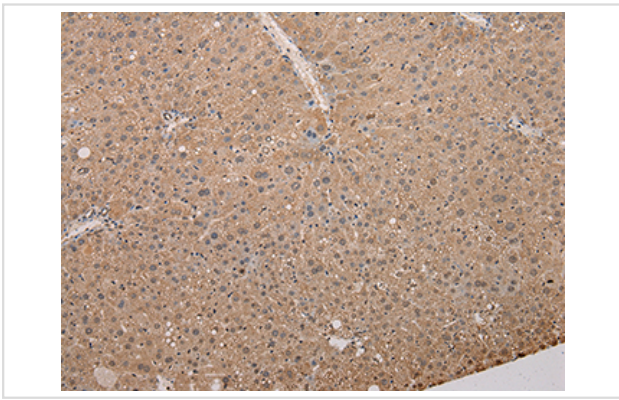
Western blotting: 1:200~1:1000

Immunohistochemistry: 1:15-1:50

Images



Gel: 8%SDS-PAGE Lysates (from left to right): Mouse kidney tissue Amount of lysate: 40ug per lane Primary antibody: 1/450 dilution Secondary antibody dilution: 1/8000 Exposure time: 1 minute



Immunohistochemical analysis of paraffin-embedded Mouse liver cancer tissue using #37285 at dilution 1/15.

Background

The size of the LY6A-expressing (LY6A+) progenitor cell population is regulated by at least two ovulation-associated factors present in the follicular fluid: transforming growth factor beta 1 and leukemia-inhibitory factor. Our work has identified a population of LY6A+ MOSE progenitor cells on the surface of the ovary that may play a role in ovulatory wound healing.

Note: This product is for in vitro research use only