

## CERS2 Antibody

Catalog No: #37286

Orders: order@signalwayantibody.com

Support: tech@signalwayantibody.com

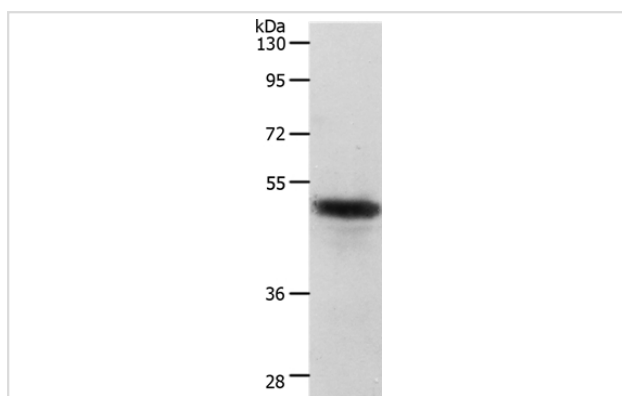
## Description

Product Name	CERS2 Antibody
Host Species	Rabbit
Clonality	Polyclonal
Purification	Antigen affinity purification.
Applications	WB
Species Reactivity	Hu
Specificity	The antibody detects endogenous levels of total CERS2 protein.
Immunogen Type	Peptide
Immunogen Description	Synthetic peptide corresponding to a region derived from internal residues of human Ceramide synthase 2
Target Name	CERS2
Other Names	L3; LASS2; SP260; TMSG1
Accession No.	Swiss-Prot#: Q96G23 NCBI Gene ID: 29956 Gene Accsion: NP_071358
Uniprot	Q96G23
GeneID	29956;
SDS-PAGE MW	45kd
Concentration	1.5mg/ml
Formulation	Rabbit IgG in pH7.4 PBS, 0.05% NaN <sub>3</sub> , 40% Glycerol.
Storage	Store at -20°C

## Application Details

Western blotting: 1:500-1:2000

## Images



Gel: 10%SDS-PAGE

Lysates (from left to right): Human liver cancer tissue

Amount of lysate: 40ug per lane

Primary antibody: 1/750 dilution

Secondary antibody dilution: 1/8000

Exposure time: 40 seconds

## Background

This gene encodes a protein that has sequence similarity to yeast longevity assurance gene 1. Mutation or overexpression of the related gene in yeast has been shown to alter yeast lifespan. The human protein may play a role in the regulation of cell growth. Alternatively spliced transcript variants

encoding the same protein have been described. Suppresses the growth of cancer cells. May be involved in sphingolipid synthesis. Expressed in kidney, liver, brain, heart, placenta and lung.

---

Note: This product is for in vitro research use only