

## S1PR3 Antibody

Catalog No: #37289

Orders: order@signalwayantibody.com

Support: tech@signalwayantibody.com

## Description

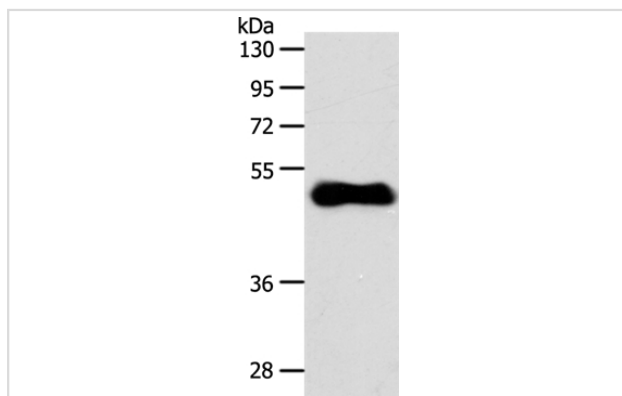
Product Name	S1PR3 Antibody
Host Species	Rabbit
Clonality	Polyclonal
Purification	Antigen affinity purification.
Applications	WB IHC
Species Reactivity	Hu
Specificity	The antibody detects endogenous levels of total S1PR3 protein.
Immunogen Type	Peptide
Immunogen Description	Synthetic peptide corresponding to a region derived from internal residues of human Sphingosine-1-phosphate receptor 3
Target Name	S1PR3
Other Names	EDG3; LPB3; S1P3; EDG-3
Accession No.	Swiss-Prot#: Q99500NCBI Gene ID: 1903Gene Accssion: NP_005217
Uniprot	Q99500
GeneID	1903;
SDS-PAGE MW	42kd
Concentration	1.4mg/ml
Formulation	Rabbit IgG in pH7.4 PBS, 0.05% NaN <sub>3</sub> , 40% Glycerol.
Storage	Store at -20°C

## Application Details

Western blotting: 1:1000-1:5000

Immunohistochemistry: 1:25-1:100

## Images



Gel: 10%SDS-PAGE

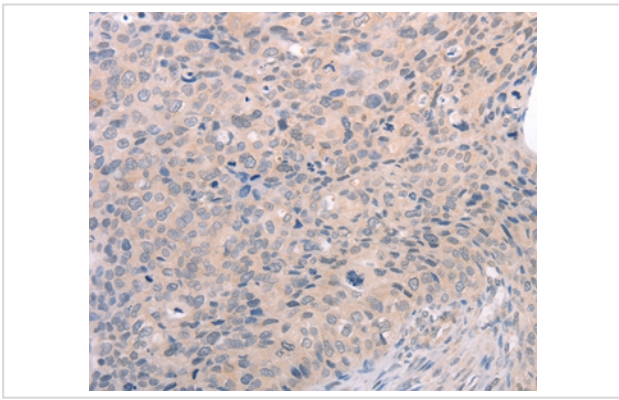
Lysates (from left to right): Human fetal brain tissue

Amount of lysate: 40ug per lane

Primary antibody: 1/700 dilution

Secondary antibody dilution: 1/8000

Exposure time: 20 seconds



Immunohistochemical analysis of paraffin-embedded Human cervical cancer tissue using #37289 at dilution 1/30.

## Background

This gene encodes a member of the EDG family of receptors, which are G protein-coupled receptors. This protein has been identified as a functional receptor for sphingosine 1-phosphate and likely contributes to the regulation of angiogenesis and vascular endothelial cell function. Receptor for the lysosphingolipid sphingosine 1-phosphate (S1P). S1P is a bioactive lysophospholipid that elicits diverse physiological effect on most types of cells and tissues. When expressed in rat HTC4 hepatoma cells, is capable of mediating S1P-induced cell proliferation and suppression of apoptosis.

Note: This product is for in vitro research use only