

## S1PR4 Antibody

Catalog No: #37290

Orders: order@signalwayantibody.com

Support: tech@signalwayantibody.com

## Description

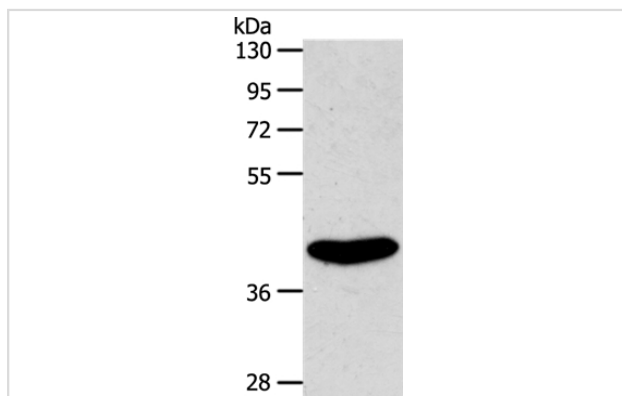
Product Name	S1PR4 Antibody
Host Species	Rabbit
Clonality	Polyclonal
Purification	Antigen affinity purification.
Applications	WB IHC
Species Reactivity	Hu
Specificity	The antibody detects endogenous levels of total S1PR4 protein.
Immunogen Type	Peptide
Immunogen Description	Synthetic peptide corresponding to residues near the C terminal of human Sphingosine-1-phosphate receptor 4
Target Name	S1PR4
Other Names	EDG6; LPC1; S1P4; SLP4
Accession No.	Swiss-Prot#: O95977NCBI Gene ID: 8698Gene Accssion: NP_003766
Uniprot	O95977
GeneID	8698;
SDS-PAGE MW	42kd
Concentration	1.6mg/ml
Formulation	Rabbit IgG in pH7.4 PBS, 0.05% NaN <sub>3</sub> , 40% Glycerol.
Storage	Store at -20°C

## Application Details

Western blotting: 1:500-1:2000

Immunohistochemistry: 1:25-1:100

## Images



Gel: 10%SDS-PAGE

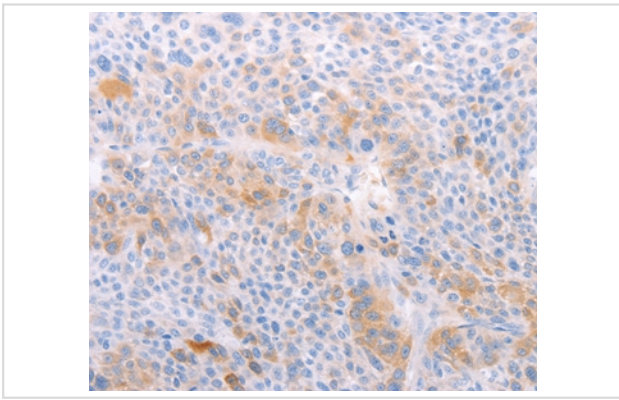
Lysates (from left to right): Rat kidney tissue

Amount of lysate: 50ug per lane

Primary antibody: 1/800 dilution

Secondary antibody dilution: 1/8000

Exposure time: 20 seconds



Immunohistochemical analysis of paraffin-embedded Human liver cancer tissue using #37290 at dilution 1/40.

## Background

This gene is a member of the endothelial differentiation, G-protein-coupled (EDG) receptor gene family. EDG receptors bind lysophospholipids or lysosphingolipids as ligands, and are involved in cell signalling in many different cell types. This EDG receptor gene is intronless and is specifically expressed in the lymphoid tissue. Receptor for the lysosphingolipid sphingosine 1-phosphate (S1P). S1P is a bioactive lysophospholipid that elicits diverse physiological effect on most types of cells and tissues.

Note: This product is for in vitro research use only