

## S1PR5 Antibody

Catalog No: #37291

Orders: order@signalwayantibody.com

Support: tech@signalwayantibody.com

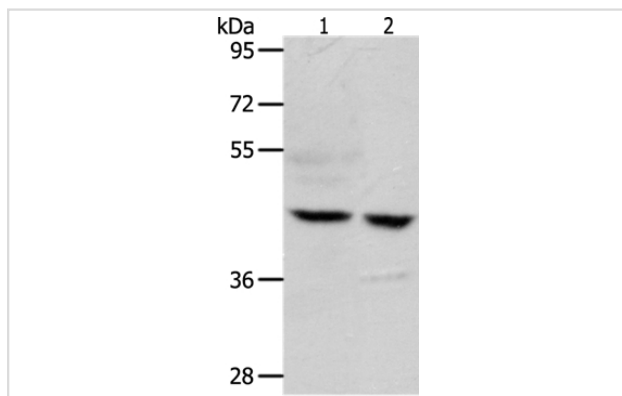
## Description

Product Name	S1PR5 Antibody
Host Species	Rabbit
Clonality	Polyclonal
Purification	Antigen affinity purification.
Applications	WB
Species Reactivity	Hu Ms Rt
Specificity	The antibody detects endogenous levels of total S1PR5 protein.
Immunogen Type	Peptide
Immunogen Description	Synthetic peptide corresponding to a region derived from internal residues of human Sphingosine-1-phosphate receptor 5
Target Name	S1PR5
Other Names	EDG8; S1P5; Edg-8; SPPR-1; SPPR-2
Accession No.	Swiss-Prot#: Q9H228NCBI Gene ID: 53637Gene Accssion: NP_110387
Uniprot	Q9H228
GeneID	53637;
SDS-PAGE MW	42kd
Concentration	1.5mg/ml
Formulation	Rabbit IgG in pH7.4 PBS, 0.05% NaN <sub>3</sub> , 40% Glycerol.
Storage	Store at -20°C

## Application Details

Western blotting: 1:500-1:2000

## Images



Gel: 10%SDS-PAGE  
 Lysates (from left to right): Human brain malignant glioma tissue and MCF7 cell  
 Amount of lysate: 40ug per lane  
 Primary antibody: 1/750 dilution  
 Secondary antibody dilution: 1/8000  
 Exposure time: 20 seconds

## Background

The lysosphingolipid sphingosine 1-phosphate (S1P) regulates cell proliferation, apoptosis, motility, and neurite retraction. Its actions may be both

intracellular as a second messenger and extracellular as a receptor ligand. S1P and the structurally related lysolipid mediator lysophosphatidic acid (LPA) signal cells through a set of G protein-coupled receptors known as EDG receptors. Some EDG receptors are S1P receptors; others are LPA receptors.

---

Note: This product is for in vitro research use only