

LPAR3 Antibody

Catalog No: #37292

Orders: order@signalwayantibody.comSupport: tech@signalwayantibody.com

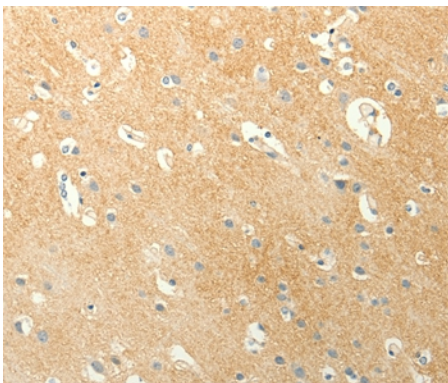
Description

Product Name	LPAR3 Antibody
Host Species	Rabbit
Clonality	Polyclonal
Purification	Antigen affinity purification.
Applications	IHC
Species Reactivity	Hu
Specificity	The antibody detects endogenous levels of total LPAR3 protein.
Immunogen Type	Peptide
Immunogen Description	Synthetic peptide corresponding to residues near the N terminal of human lysophosphatidic acid receptor 3
Target Name	LPAR3
Other Names	EDG7; GPCR; LPA3; Edg-7; LP-A3; HOFNH30; RP4-678I3
Accession No.	Swiss-Prot#: Q9UBY5NCBI Gene ID: 23566Gene Accssion: NP_036284
Uniprot	Q9UBY5
GeneID	23566;
Concentration	0.4mg/ml
Formulation	Rabbit IgG in pH7.4 PBS, 0.05% NaN ₃ , 40% Glycerol.
Storage	Store at -20°C

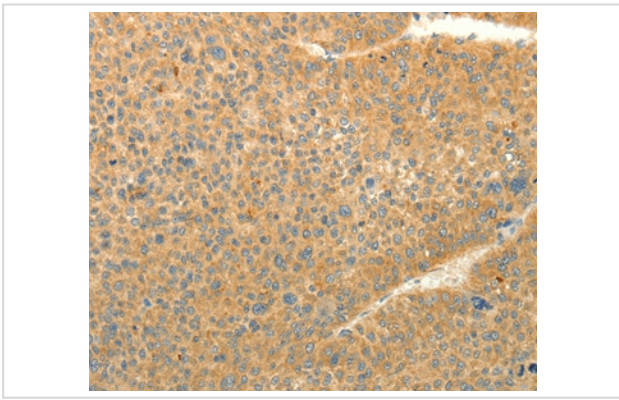
Application Details

Immunohistochemistry: 1:15-1:50

Images



Immunohistochemical analysis of paraffin-embedded Human brain tissue using #37292 at dilution 1/10.



Immunohistochemical analysis of paraffin-embedded Human liver cancer tissue using #37292 at dilution 1/10.

Background

This gene encodes a member of the G protein-coupled receptor family, as well as the EDG family of proteins. This protein functions as a cellular receptor for lysophosphatidic acid and mediates lysophosphatidic acid-evoked calcium mobilization. This receptor couples predominantly to G(q/11) alpha proteins.

Note: This product is for in vitro research use only