

## FAT4 Antibody

Catalog No: #37293

Orders: [order@signalwayantibody.com](mailto:order@signalwayantibody.com)Support: [tech@signalwayantibody.com](mailto:tech@signalwayantibody.com)

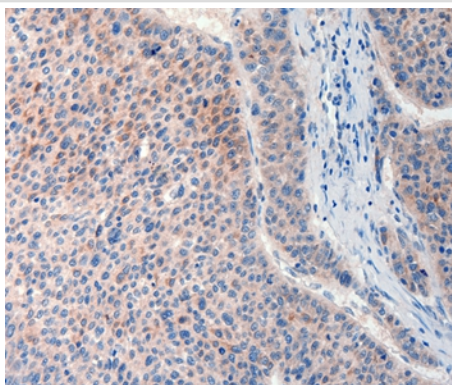
## Description

Product Name	FAT4 Antibody
Host Species	Rabbit
Clonality	Polyclonal
Purification	Antigen affinity purification.
Applications	IHC
Species Reactivity	Hu
Specificity	The antibody detects endogenous levels of total FAT4 protein.
Immunogen Type	Peptide
Immunogen Description	Synthetic peptide corresponding to residues near the C terminal of human FAT tumor suppressor homolog 4 (Drosophila)
Target Name	FAT4
Other Names	FATJ; FAT-J; CDHF14; CDHR11; NBLA00548
Accession No.	Swiss-Prot#: Q6V0I7 NCBI Gene ID: 79633Gene Accssion: NP_078858
Uniprot	Q6V0I7
GeneID	79633;
Concentration	0.7mg/ml
Formulation	Rabbit IgG in pH7.4 PBS, 0.05% NaN <sub>3</sub> , 40% Glycerol.
Storage	Store at -20°C

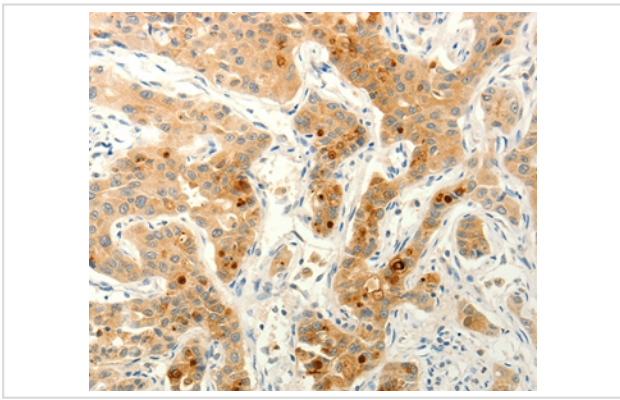
## Application Details

Immunohistochemistry: 1:25-1:100

## Images



Immunohistochemical analysis of paraffin-embedded Human liver cancer tissue using #37293 at dilution 1/20.



Immunohistochemical analysis of paraffin-embedded Human lung cancer tissue using #37293 at dilution 1/20.

## Background

FAT1, FAT2, FAT3 and FAT4 are human homologs of *Drosophila* Fat, which is involved in tumor suppression and planar cell polarity (PCP). FAT4 undergo the first proteolytic cleavage by Furin and are predicted to undergo the second cleavage by  $\gamma$ secretase to release intracellular domain (ICD). FAT4 directly interacts with MPDZ/MUPP1 to recruit membrane-associated guanylate kinase MPP5/PALS1. FAT4 is involved in the maintenance of PCP and inhibition of cell proliferation.

Note: This product is for in vitro research use only