

FAT3 Antibody

Catalog No: #37294

Orders: order@signalwayantibody.comSupport: tech@signalwayantibody.com

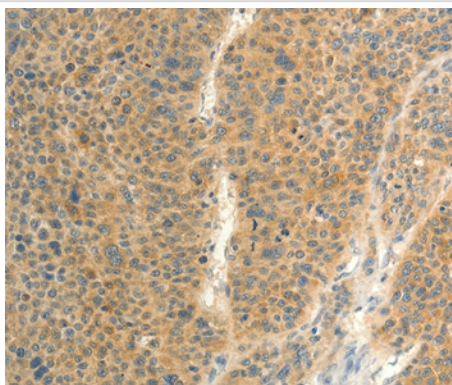
Description

Product Name	FAT3 Antibody
Host Species	Rabbit
Clonality	Polyclonal
Purification	Antigen affinity purification.
Applications	IHC
Species Reactivity	Hu
Specificity	The antibody detects endogenous levels of total FAT3 protein.
Immunogen Type	Peptide
Immunogen Description	Synthetic peptide corresponding to a region derived from internal residues of human FAT tumor suppressor homolog 3 (Drosophila)
Target Name	FAT3
Other Names	CDHF15; CDHR10
Accession No.	Swiss-Prot#: Q8TDW7 NCBI Gene ID: 120114Gene Accssion: NP_001008781
Uniprot	Q8TDW7
GeneID	120114;
Concentration	0.7mg/ml
Formulation	Rabbit IgG in pH7.4 PBS, 0.05% NaN ₃ , 40% Glycerol.
Storage	Store at -20°C

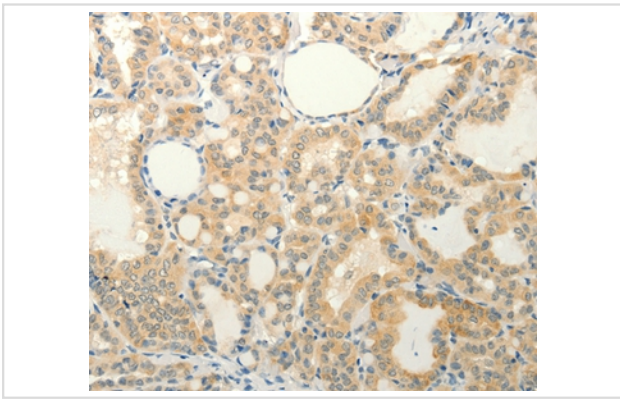
Application Details

Immunohistochemistry: 1:25-1:100

Images



Immunohistochemical analysis of paraffin-embedded Human thyroid cancer tissue using #37294 at dilution 1/20.



Immunohistochemical analysis of paraffin-embedded Human liver cancer tissue using #37294 at dilution 1/20.

Background

FAT1, FAT2, FAT3 and FAT4 are human homologs of *Drosophila* Fat, which is involved in tumor suppression and planar cell polarity (PCP). The atypical cadherin Fat3 ensures that retinal amacrine cells (ACs) develop this unipolar morphology. Fat3 expression was restricted to the nervous system, for example in the brain, it is expressed in a variety of regions and axon fascicles. However, its strongest expression was observed in the olfactory bulb and retina.

Note: This product is for in vitro research use only