

SMO Antibody

Catalog No: #37295

Orders: order@signalwayantibody.comSupport: tech@signalwayantibody.com

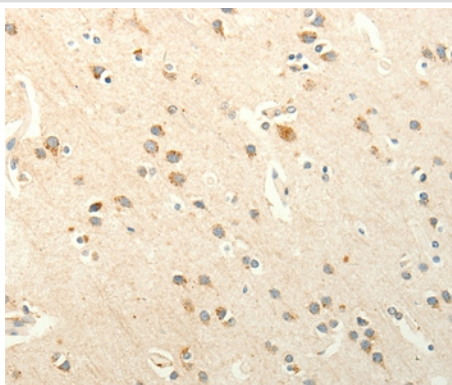
Description

Product Name	SMO Antibody
Host Species	Rabbit
Clonality	Polyclonal
Purification	Antigen affinity purification.
Applications	IHC
Species Reactivity	Hu
Specificity	The antibody detects endogenous levels of total SMO protein.
Immunogen Type	Peptide
Immunogen Description	Synthetic peptide corresponding to residues near the C terminal of human smoothed, frizzled family receptor
Target Name	SMO
Other Names	Gx; SMOH; FZD11
Accession No.	Swiss-Prot#: Q99835NCBI Gene ID: 6608Gene Accssion: NP_005622
Uniprot	Q99835
GeneID	6608;
Concentration	0.7mg/ml
Formulation	Rabbit IgG in pH7.4 PBS, 0.05% NaN ₃ , 40% Glycerol.
Storage	Store at -20°C

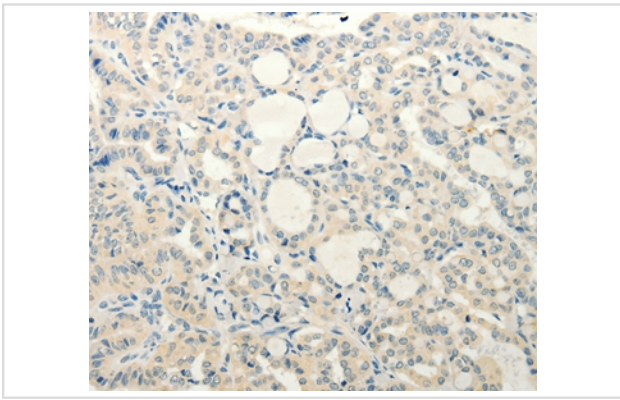
Application Details

Immunohistochemistry: 1:25-1:100

Images



Immunohistochemical analysis of paraffin-embedded Human brain tissue using #37295 at dilution 1/20.



Immunohistochemical analysis of paraffin-embedded Human thyroid cancer tissue using #37295 at dilution 1/20.

Background

The protein encoded by this gene is a G protein-coupled receptor that interacts with the patched protein, a receptor for hedgehog proteins. The encoded protein transduces signals to other proteins after activation by a hedgehog protein/patched protein complex.

Note: This product is for in vitro research use only