

## FZD10 Antibody

Catalog No: #37298

Orders: [order@signalwayantibody.com](mailto:order@signalwayantibody.com)Support: [tech@signalwayantibody.com](mailto:tech@signalwayantibody.com)

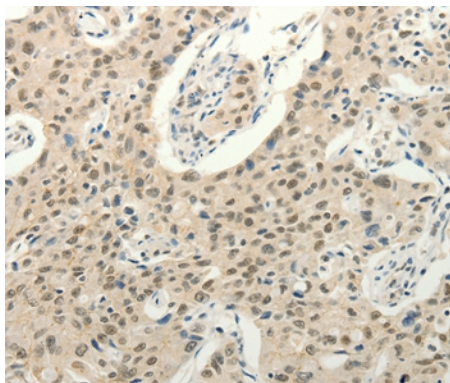
## Description

Product Name	FZD10 Antibody
Host Species	Rabbit
Clonality	Polyclonal
Purification	Antigen affinity purification.
Applications	IHC
Species Reactivity	Hu Ms
Specificity	The antibody detects endogenous levels of total FZD10 protein.
Immunogen Type	Peptide
Immunogen Description	Synthetic peptide corresponding to a region derived from internal residues of human frizzled family receptor 10
Target Name	FZD10
Other Names	Fz10; FzE7; CD350; FZ-10; hFz10
Accession No.	Swiss-Prot#: Q9ULW2NCBI Gene ID: 11211Gene Accsion: NP_009128
Uniprot	Q9ULW2
GeneID	11211;
Concentration	1.9mg/ml
Formulation	Rabbit IgG in pH7.4 PBS, 0.05% NaN <sub>3</sub> , 40% Glycerol.
Storage	Store at -20°C

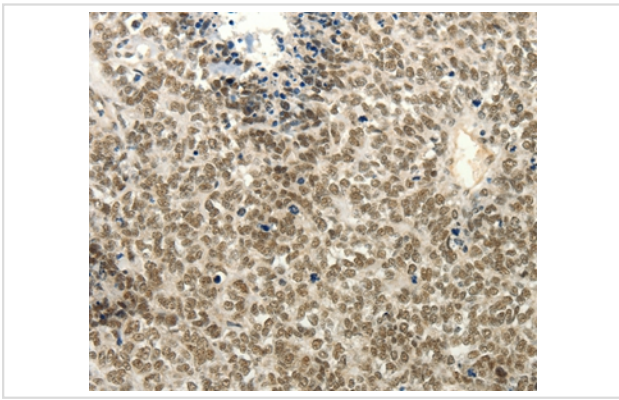
## Application Details

Immunohistochemistry: 1:50-1:200

## Images



Immunohistochemical analysis of paraffin-embedded Human lung cancer tissue using #37298 at dilution 1/50.



Immunohistochemical analysis of paraffin-embedded Human ovarian cancer tissue using #37298 at dilution 1/50.

## Background

This gene is a member of the frizzled gene family. Members of this family encode 7-transmembrane domain proteins that are receptors for the Wingless type MMTV integration site family of signaling proteins. Most frizzled receptors are coupled to the beta-catenin canonical signaling pathway. Using array analysis, expression of this intronless gene is significantly up-regulated in two cases of primary colon cancer.

Note: This product is for in vitro research use only