

RXFP3 Antibody

Catalog No: #37299

Orders: order@signalwayantibody.comSupport: tech@signalwayantibody.com

Description

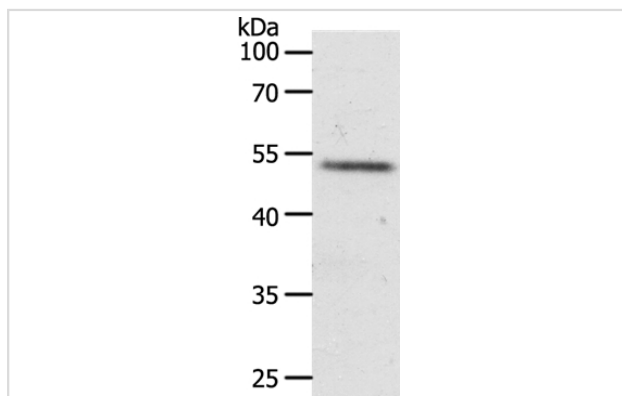
Product Name	RXFP3 Antibody
Host Species	Rabbit
Clonality	Polyclonal
Purification	Antigen affinity purification.
Applications	WB IHC
Species Reactivity	Hu Ms
Specificity	The antibody detects endogenous levels of total RXFP3 protein.
Immunogen Type	Peptide
Immunogen Description	Synthetic peptide corresponding to residues near the C terminal of human Relaxin/insulin-like family peptide receptor 3
Target Name	RXFP3
Other Names	SALPR; RLN3R1; RXFPR3; GPCR135
Accession No.	Swiss-Prot#: Q9NSD7NCBI Gene ID: 51289Gene Accssion: NP_057652
Uniprot	Q9NSD7
GeneID	51289;
SDS-PAGE MW	51kd
Concentration	0.7mg/ml
Formulation	Rabbit IgG in pH7.4 PBS, 0.05% NaN ₃ , 40% Glycerol.
Storage	Store at -20°C

Application Details

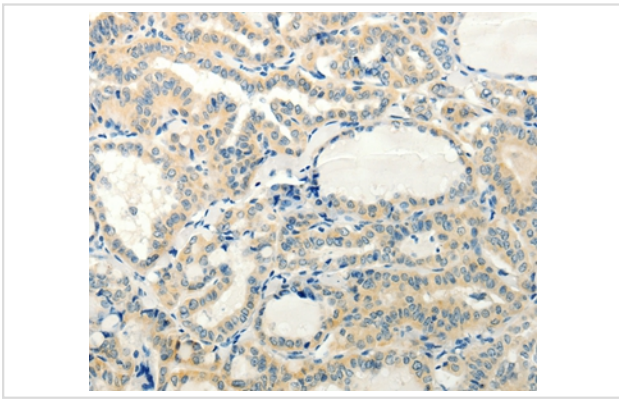
Western blotting: 1:200-1:1000

Immunohistochemistry: 1:25-1:100

Images



Gel: 10%SDS-PAGE
Lysate: 40ug Jurkat cell
Primary antibody: 1/350 dilution
Secondary antibody dilution: 1/8000
Exposure time: 10 minutes



Immunohistochemical analysis of paraffin-embedded Human thyroid cancer tissue using #37299 at dilution 1/20.

Background

Relaxin/insulin-like family peptide receptor 3, also known as RFXFP3, is a human G-protein coupled receptor. Receptor for RNL3/relaxin-3. Binding of the ligand inhibit cAMP accumulation. Expressed predominantly in brain regions. Highest expression in substantia nigra and pituitary, followed by hippocampus, spinal cord, amygdala, caudate nucleus and corpus callosum, quite low level in cerebellum. In peripheral tissues, relatively high levels in adrenal glands, low levels in pancreas, salivary gland, placenta, mammary gland and testis.

Note: This product is for in vitro research use only