

ABCA2 Antibody

Catalog No: #37304

Orders: order@signalwayantibody.comSupport: tech@signalwayantibody.com

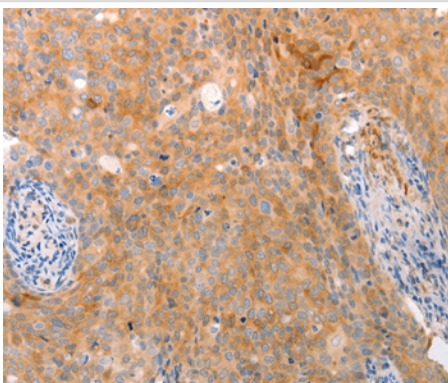
Description

Product Name	ABCA2 Antibody
Host Species	Rabbit
Clonality	Polyclonal
Purification	Antigen affinity purification.
Applications	IHC
Species Reactivity	Hu
Specificity	The antibody detects endogenous levels of total ABCA2 protein.
Immunogen Type	Peptide
Immunogen Description	Synthetic peptide corresponding to a region derived from internal residues of human ATP-binding cassette, sub-family A (ABC1), member 2
Target Name	ABCA2
Other Names	ABC2
Accession No.	Swiss-Prot#: Q9BZC7NCBI Gene ID: 20Gene Accssion: NP_001597
Uniprot	Q9BZC7
GeneID	20;
Concentration	0.8mg/ml
Formulation	Rabbit IgG in pH7.4 PBS, 0.05% NaN ₃ , 40% Glycerol.
Storage	Store at -20°C

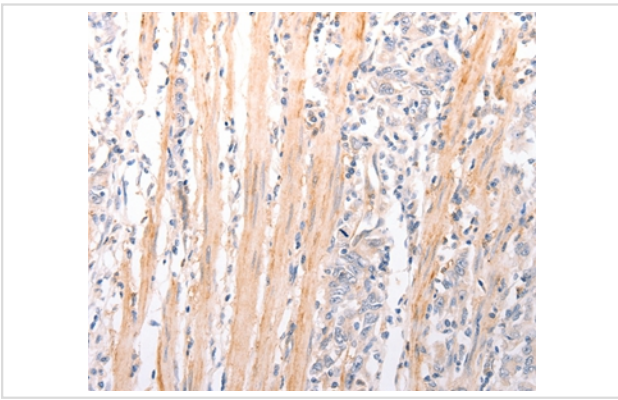
Application Details

Immunohistochemistry: 1:25-1:100

Images



Immunohistochemical analysis of paraffin-embedded Human cervical cancer tissue using #37304 at dilution 1/50.



Immunohistochemical analysis of paraffin-embedded Human gastric cancer tissue using #37304 at dilution 1/50.

Background

The membrane-associated protein encoded by this gene is a member of the superfamily of ATP-binding cassette (ABC) transporters. ABC proteins transport various molecules across extra- and intracellular membranes. ABC genes are divided into seven distinct subfamilies (ABC1, MDR/TAP, MRP, ALD, OABP, GCN20, White). This protein is a member of the ABC1 subfamily. Members of the ABC1 subfamily comprise the only major ABC subfamily found exclusively in multicellular eukaryotes. This protein is highly expressed in brain tissue and may play a role in macrophage lipid metabolism and neural development. Two transcript variants encoding different isoforms have been found for this gene.

Note: This product is for in vitro research use only