

CASP9 (active) Antibody

Catalog No: #37307

Orders: order@signalwayantibody.comSupport: tech@signalwayantibody.com

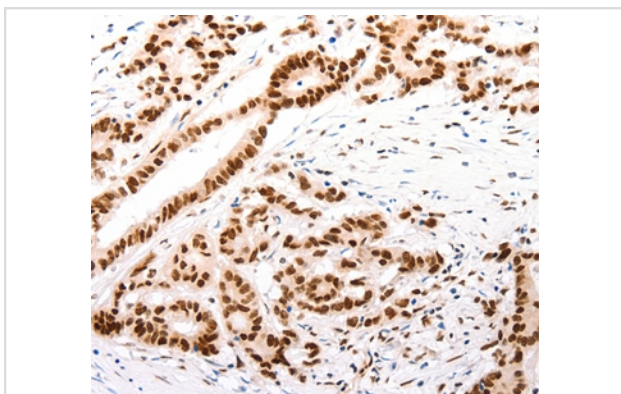
Description

Product Name	CASP9 (active) Antibody
Host Species	Rabbit
Clonality	Polyclonal
Purification	Antigen affinity purification.
Applications	IHC
Species Reactivity	Hu
Specificity	The antibody detects endogenous levels of total CASP9 (active) protein.
Immunogen Type	Peptide
Immunogen Description	Synthetic peptide corresponding to a region derived from internal residues of human caspase 9, apoptosis-related cysteine peptidase
Target Name	CASP9 (active)
Other Names	MCH6; APAF3; APAF-3; PPP1R56; ICE-LAP6; CASPASE-9c
Accession No.	Swiss-Prot#: P55211NCBI Gene ID: 842Gene Accssion: NP_001220
Uniprot	P55211
GeneID	842;
Concentration	2.4mg/ml
Formulation	Rabbit IgG in pH7.4 PBS, 0.05% NaN ₃ , 40% Glycerol.
Storage	Store at -20°C

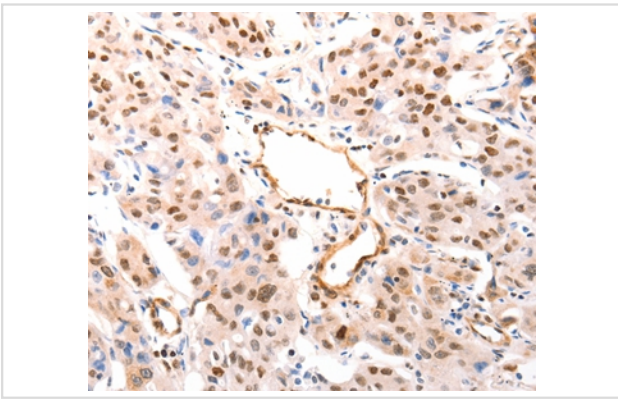
Application Details

Immunohistochemistry: 1:100-1:300

Images



Immunohistochemical analysis of paraffin-embedded Human colon cancer tissue using #37307 at dilution 1/80.



Immunohistochemical analysis of paraffin-embedded Human lung cancer tissue using #37307 at dilution 1/80.

Background

This gene encodes a member of the cysteine-aspartic acid protease (caspase) family. Sequential activation of caspases plays a central role in the execution-phase of cell apoptosis. Caspases exist as inactive proenzymes which undergo proteolytic processing at conserved aspartic residues to produce two subunits, large and small, that dimerize to form the active enzyme. This protein is processed by caspase APAF1; this step is thought to be one of the earliest in the caspase activation cascade. Alternative splicing results in two transcript variants which encode different isoforms.

Note: This product is for in vitro research use only