

ADAM11 Antibody

Catalog No: #37308

Orders: order@signalwayantibody.com

Support: tech@signalwayantibody.com

Description

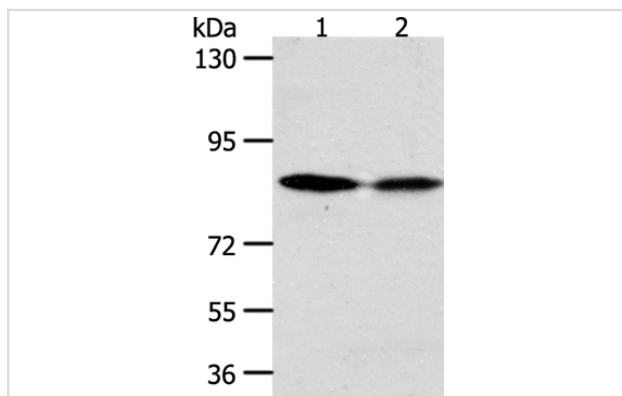
Product Name	ADAM11 Antibody
Host Species	Rabbit
Clonality	Polyclonal
Purification	Antigen affinity purification.
Applications	WB IHC
Species Reactivity	Hu Ms
Specificity	The antibody detects endogenous levels of total ADAM11 protein.
Immunogen Type	Peptide
Immunogen Description	Synthetic peptide corresponding to a region derived from internal residues of human ADAM metallopeptidase domain 11
Target Name	ADAM11
Other Names	MDC
Accession No.	Swiss-Prot#: O75078 NCBI Gene ID: 4185Gene Accssion: NP_002381
Uniprot	O75078
GeneID	4185;
SDS-PAGE MW	83kd
Concentration	1.5mg/ml
Formulation	Rabbit IgG in pH7.4 PBS, 0.05% NaN ₃ , 40% Glycerol.
Storage	Store at -20°C

Application Details

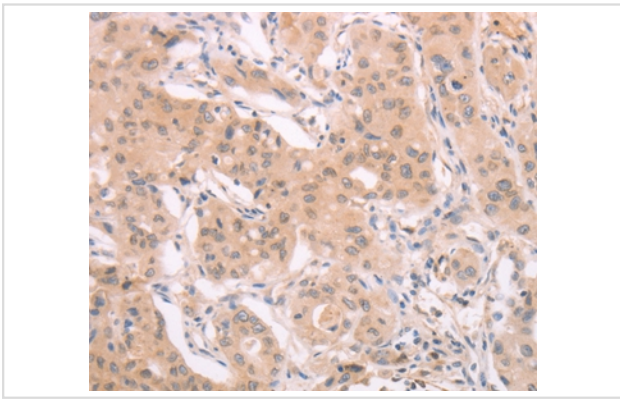
Western blotting: 1:200-1:1000

Immunohistochemistry: 1:50-1:200

Images



Gel: 10%SDS-PAGE
 Lysates (from left to right): Hela and SKOV3 cell
 Amount of lysate: 50ug per lane
 Primary antibody: 1/500 dilution
 Secondary antibody dilution: 1/8000
 Exposure time: 10 minutes



Immunohistochemical analysis of paraffin-embedded Human lung cancer tissue using #37308 at dilution 1/40.

Background

This gene encodes a member of the ADAM (a disintegrin and metalloprotease) protein family. Members of this family are membrane-anchored proteins structurally related to snake venom disintegrins, and have been implicated in a variety of biological processes involving cell-cell and cell-matrix interactions, including fertilization, muscle development, and neurogenesis. This gene represents a candidate tumor suppressor gene for human breast cancer based on its location within a minimal region of chromosome 17q21 previously defined by tumor deletion mapping.

Note: This product is for in vitro research use only