

ADAM12 Antibody

Catalog No: #37309

Orders: order@signalwayantibody.comSupport: tech@signalwayantibody.com

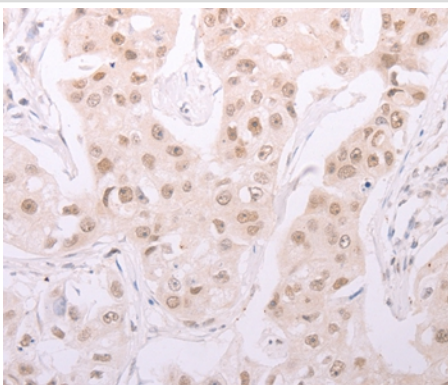
Description

Product Name	ADAM12 Antibody
Host Species	Rabbit
Clonality	Polyclonal
Purification	Antigen affinity purification.
Applications	IHC
Species Reactivity	Hu Ms
Specificity	The antibody detects endogenous levels of total ADAM12 protein.
Immunogen Type	Peptide
Immunogen Description	Synthetic peptide corresponding to a region derived from internal residues of human ADAM metalloproteinase domain 12
Target Name	ADAM12
Other Names	MCMP; MLTN; MLTNA; MCMPMitna
Accession No.	Swiss-Prot#: O43184NCBI Gene ID: 8038Gene Accssion: NP_003465
Uniprot	O43184
GeneID	8038;
Concentration	1.3mg/ml
Formulation	Rabbit IgG in pH7.4 PBS, 0.05% NaN ₃ , 40% Glycerol.
Storage	Store at -20°C

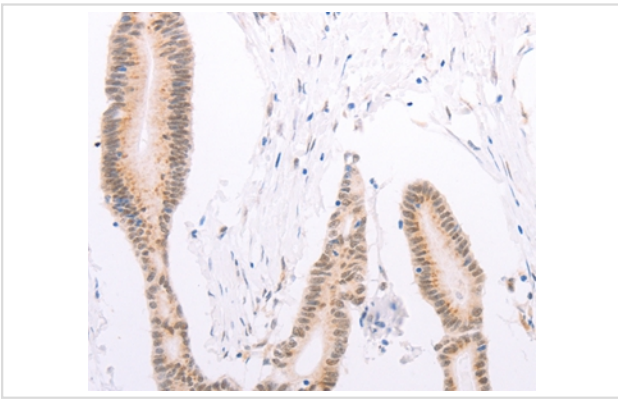
Application Details

Immunohistochemistry: 1:25-1:100

Images



Immunohistochemical analysis of paraffin-embedded Human breast cancer tissue using #37309 at dilution 1/30.



Immunohistochemical analysis of paraffin-embedded Human colon cancer tissue using #37309 at dilution 1/30.

Background

This gene encodes a member of the ADAM (a disintegrin and metalloprotease) protein family. Members of this family are membrane-anchored proteins structurally related to snake venom disintegrins, and have been implicated in a variety of biological processes involving cell-cell and cell-matrix interactions, including fertilization, muscle development, and neurogenesis. This gene has two alternatively spliced transcripts: a shorter secreted form and a longer membrane-bound form. The shorter form is found to stimulate myogenesis.

Note: This product is for in vitro research use only