

ADAM28 Antibody

Catalog No: #37311

Orders: order@signalwayantibody.comSupport: tech@signalwayantibody.com

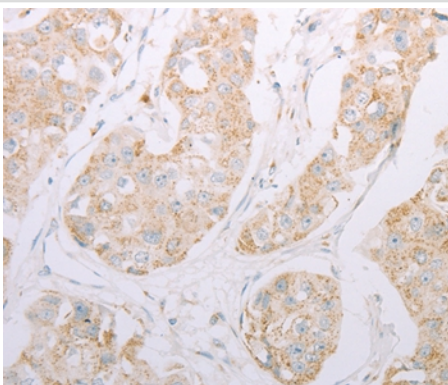
Description

Product Name	ADAM28 Antibody
Host Species	Rabbit
Clonality	Polyclonal
Purification	Antigen affinity purification.
Applications	IHC
Species Reactivity	Hu
Specificity	The antibody detects endogenous levels of total ADAM28 protein.
Immunogen Type	Peptide
Immunogen Description	Synthetic peptide corresponding to a region derived from internal residues of human ADAM metallopeptidase domain 28
Target Name	ADAM28
Other Names	MDCL; MDC-L; ADAM23; MDC-Lm; MDC-Ls; eMDCII; ADAM 28; eMDC II
Accession No.	Swiss-Prot#: Q9UKQ2 NCBI Gene ID: 10863Gene Accssion: NP_055080
Uniprot	Q9UKQ2
GeneID	10863;
Concentration	1.2mg/ml
Formulation	Rabbit IgG in pH7.4 PBS, 0.05% NaN ₃ , 40% Glycerol.
Storage	Store at -20°C

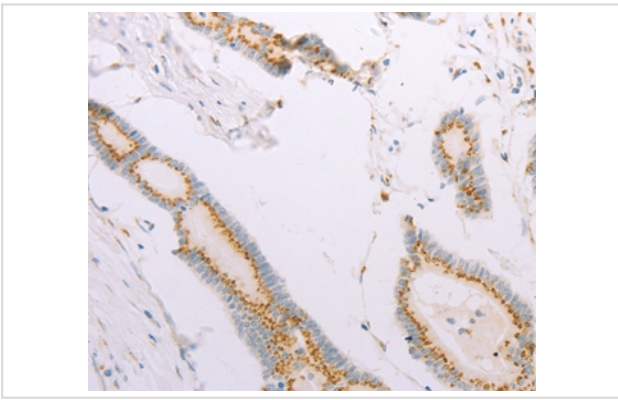
Application Details

Immunohistochemistry: 1:25-1:100

Images



Immunohistochemical analysis of paraffin-embedded Human breast cancer tissue using #37311 at dilution 1/30.



Immunohistochemical analysis of paraffin-embedded Human colon cancer tissue using #37311 at dilution 1/30.

Background

This gene encodes a member of the ADAM (a disintegrin and metalloprotease domain) family. Members of this family are membrane-anchored proteins structurally related to snake venom disintegrins, and have been implicated in a variety of biological processes involving cell-cell and cell-matrix interactions, including fertilization, muscle development, and neurogenesis. The protein encoded by this gene is a lymphocyte-expressed ADAM protein. Alternative splicing results in two transcript variants. The shorter version encodes a secreted isoform, while the longer version encodes a transmembrane isoform.

Note: This product is for in vitro research use only