

ADAM29 Antibody

Catalog No: #37312

Orders: order@signalwayantibody.comSupport: tech@signalwayantibody.com

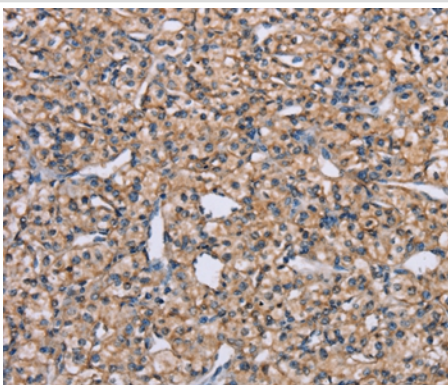
Description

Product Name	ADAM29 Antibody
Host Species	Rabbit
Clonality	Polyclonal
Purification	Antigen affinity purification.
Applications	IHC
Species Reactivity	Hu
Specificity	The antibody detects endogenous levels of total ADAM29 protein.
Immunogen Type	Peptide
Immunogen Description	Synthetic peptide corresponding to a region derived from internal residues of human ADAM metallopeptidase domain 29
Target Name	ADAM29
Other Names	CT73; svph1
Accession No.	Swiss-Prot#: Q9UKF5NCBI Gene ID: 11086Gene Accssion: NP_001124175/Q9UKF5
Uniprot	Q9UKF5
GeneID	11086;
Concentration	2.6mg/ml
Formulation	Rabbit IgG in pH7.4 PBS, 0.05% NaN ₃ , 40% Glycerol.
Storage	Store at -20°C

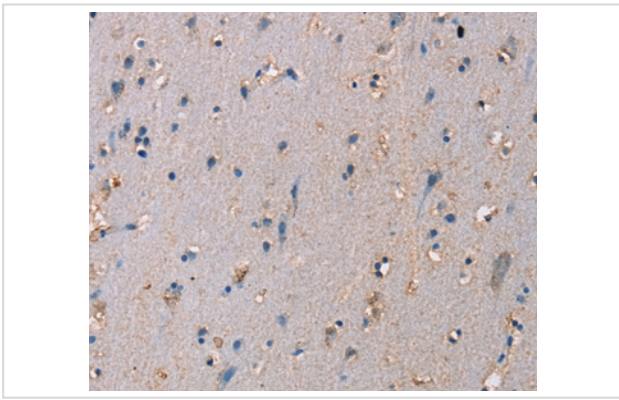
Application Details

Immunohistochemistry: 1:50-1:200

Images



Immunohistochemical analysis of paraffin-embedded Human prostate cancer tissue using #37312 at dilution 1/40.



Immunohistochemical analysis of paraffin-embedded Human brain tissue using #37312 at dilution 1/40.

Background

This gene encodes a member of the ADAM (a disintegrin and metalloprotease domain) family. Members of this family are membrane-anchored proteins structurally related to snake venom disintegrins, and have been implicated in a variety of biological processes involving cell-cell and cell-matrix interactions, including fertilization, muscle development, and neurogenesis. The protein encoded by this gene is highly expressed in testis and may be involved in human spermatogenesis. Alternative splicing results in multiple transcript variants that encode the same protein.?

Note: This product is for in vitro research use only