

ADAMTS16 Antibody

Catalog No: #37314

Orders: order@signalwayantibody.com

Support: tech@signalwayantibody.com

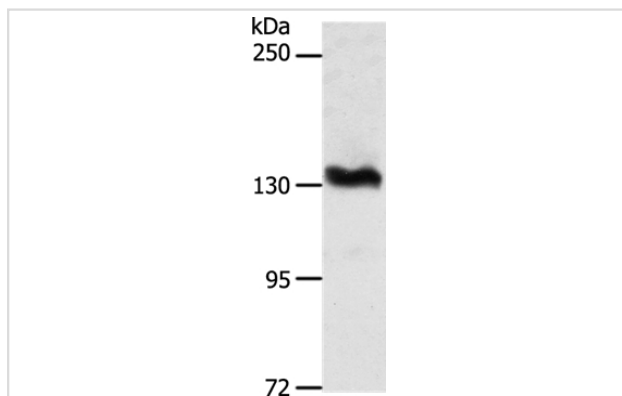
Description

Product Name	ADAMTS16 Antibody
Host Species	Rabbit
Clonality	Polyclonal
Purification	Antigen affinity purification.
Applications	WB
Species Reactivity	Hu
Specificity	The antibody detects endogenous levels of total ADAMTS16 protein.
Immunogen Type	Peptide
Immunogen Description	Synthetic peptide corresponding to a region derived from internal residues of human ADAM metalloproteinase with thrombospondin type 1 motif, 16
Target Name	ADAMTS16
Other Names	ADAMTS16s
Accession No.	Swiss-Prot#: Q8TE57 NCBI Gene ID: 170690 Gene Accession: NP_620687
Uniprot	Q8TE57
GeneID	170690;
SDS-PAGE MW	136kd
Concentration	2.7mg/ml
Formulation	Rabbit IgG in pH7.4 PBS, 0.05% NaN ₃ , 40% Glycerol.
Storage	Store at -20°C

Application Details

Western blotting: 1:500-1:2000

Images



Gel: 8%SDS-PAGE
Lysate: 40ug PC3 cell
Primary antibody: 1/1350 dilution
Secondary antibody dilution: 1/8000
Exposure time: 30 minutes

Background

This gene encodes a member of the ADAMTS (a disintegrin and metalloproteinase with thrombospondin motifs) protein family. ADAMTS family

members share several distinct protein modules, including a propeptide region, a metalloproteinase domain, a disintegrin-like domain, and a thrombospondin type 1 (TS) motif. Individual members of this family differ in the number of C-terminal TS motifs, and some have unique C-terminal domains. The protein encoded by this gene has high sequence similarity to the protein encoded by ADAMTS18, another family member.

Note: This product is for in vitro research use only