

ADH1B Antibody

Catalog No: #37319

Orders: order@signalwayantibody.comSupport: tech@signalwayantibody.com

Description

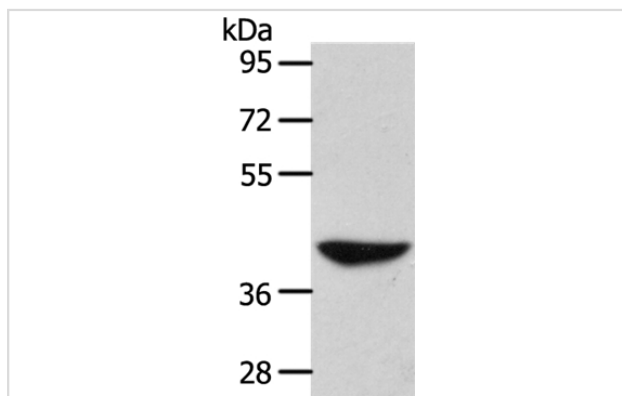
Product Name	ADH1B Antibody
Host Species	Rabbit
Clonality	Polyclonal
Purification	Antigen affinity purification.
Applications	WB IHC
Species Reactivity	Hu
Specificity	The antibody detects endogenous levels of total ADH1B protein.
Immunogen Type	Peptide
Immunogen Description	Synthetic peptide corresponding to a region derived from internal residues of human Alcohol dehydrogenase 1B (class I), beta polypeptide
Target Name	ADH1B
Other Names	ADH2
Accession No.	Swiss-Prot#: P00325NCBI Gene ID: 125Gene Accssion: NP_000659
Uniprot	P00325
GeneID	125;
SDS-PAGE MW	40kd
Concentration	1.8mg/ml
Formulation	Rabbit IgG in pH7.4 PBS, 0.05% NaN ₃ , 40% Glycerol.
Storage	Store at -20°C

Application Details

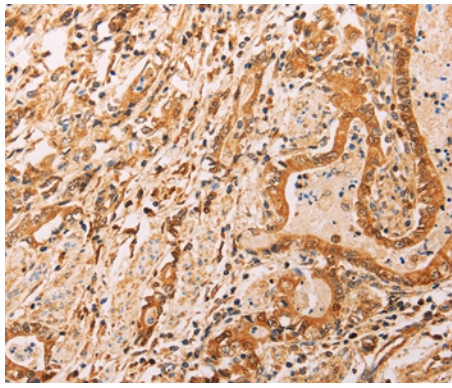
Western blotting: 1:200-1:1000

Immunohistochemistry: 1:50-1:200

Images



Gel: 10%SDS-PAGE
Lysate: 40ug 293T cell
Primary antibody: 1/450 dilution
Secondary antibody dilution: 1/8000
Exposure time: 10 minutes



Immunohistochemical analysis of paraffin-embedded Human gastric cancer tissue using #37319 at dilution 1/40.

Background

The protein encoded by this gene is a member of the alcohol dehydrogenase family. Members of this enzyme family metabolize a wide variety of substrates, including ethanol, retinol, other aliphatic alcohols, hydroxysteroids, and lipid peroxidation products. This encoded protein, consisting of several homo- and heterodimers of alpha, beta, and gamma subunits, exhibits high activity for ethanol oxidation and plays a major role in ethanol catabolism. Three genes encoding alpha, beta and gamma subunits are tandemly organized in a genomic segment as a gene cluster.

Note: This product is for in vitro research use only