

AKT2 Antibody

Catalog No: #37320

Orders: order@signalwayantibody.comSupport: tech@signalwayantibody.com

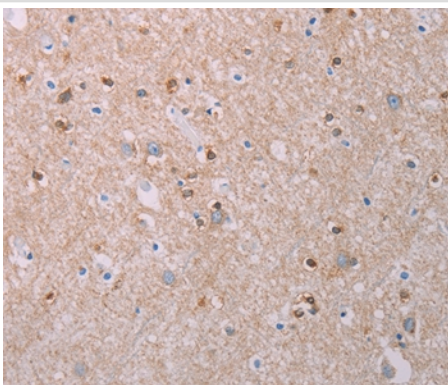
Description

Product Name	AKT2 Antibody
Host Species	Rabbit
Clonality	Polyclonal
Purification	Antigen affinity purification.
Applications	IHC
Species Reactivity	Hu
Specificity	The antibody detects endogenous levels of total AKT2 protein.
Immunogen Type	Peptide
Immunogen Description	Synthetic peptide corresponding to a region derived from internal residues of human v-akt murine thymoma viral oncogene homolog 2
Target Name	AKT2
Other Names	PKBB; PRKBB; HIHGHH; PKBBETA; RAC-BETA
Accession No.	Swiss-Prot#: P31751NCBI Gene ID: 208Gene Accssion: NP_001617
Uniprot	P31751
GeneID	208;
Concentration	2.9mg/ml
Formulation	Rabbit IgG in pH7.4 PBS, 0.05% NaN ₃ , 40% Glycerol.
Storage	Store at -20°C

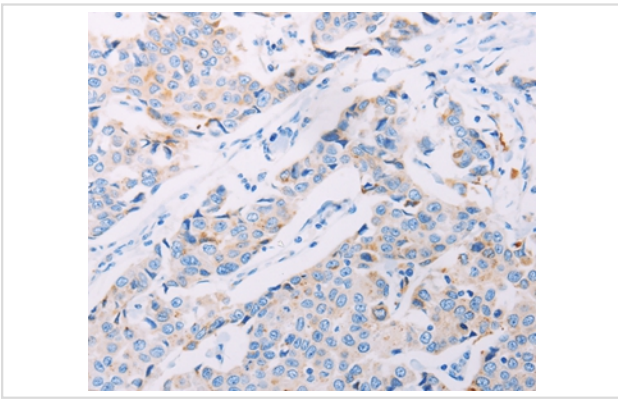
Application Details

Immunohistochemistry: 1:50-1:200

Images



Immunohistochemical analysis of paraffin-embedded Human brain tissue using #37320 at dilution 1/70.



Immunohistochemical analysis of paraffin-embedded Human breast cancer tissue using #37320 at dilution 1/70.

Background

This gene is a putative oncogene encoding a protein belonging to a subfamily of serine/threonine kinases containing SH2-like (Src homology 2-like) domains. The gene was shown to be amplified and overexpressed in 2 of 8 ovarian carcinoma cell lines and 2 of 15 primary ovarian tumors. Overexpression contributes to the malignant phenotype of a subset of human ductal pancreatic cancers. The encoded protein is a general protein kinase capable of phosphorylating several known proteins.

Note: This product is for in vitro research use only