

## AKT3 Antibody

Catalog No: #37321

Orders: [order@signalwayantibody.com](mailto:order@signalwayantibody.com)Support: [tech@signalwayantibody.com](mailto:tech@signalwayantibody.com)

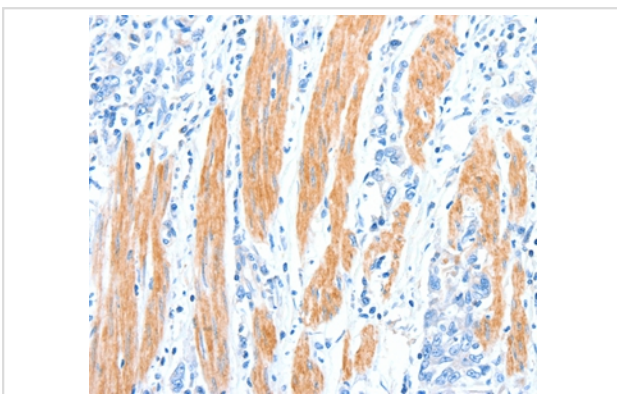
## Description

Product Name	AKT3 Antibody
Host Species	Rabbit
Clonality	Polyclonal
Purification	Antigen affinity purification.
Applications	IHC
Species Reactivity	Hu
Specificity	The antibody detects endogenous levels of total AKT3 protein.
Immunogen Type	Peptide
Immunogen Description	Synthetic peptide corresponding to a region derived from internal residues of human v-akt murine thymoma viral oncogene homolog 3 (protein kinase B, gamma)
Target Name	AKT3
Other Names	MPPH; PKBG; PRKBG; STK-2; PKB-GAMMA; RAC-gamma; RAC-PK-gamma
Accession No.	Swiss-Prot#: Q9Y243NCBI Gene ID: 10000Gene Accssion: NP_001193658
Uniprot	Q9Y243
GeneID	10000;
Concentration	1.2mg/ml
Formulation	Rabbit IgG in pH7.4 PBS, 0.05% NaN <sub>3</sub> , 40% Glycerol.
Storage	Store at -20°C

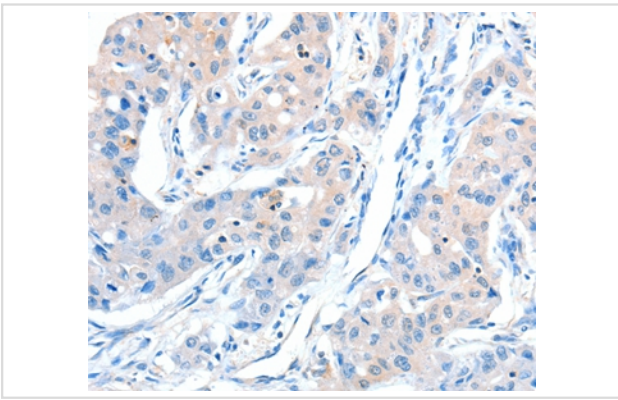
## Application Details

Immunohistochemistry: 1:25-1:100

## Images



Immunohistochemical analysis of paraffin-embedded Human gastric cancer tissue using #37321 at dilution 1/30.



Immunohistochemical analysis of paraffin-embedded Human lung cancer tissue using #37321 at dilution 1/30.

## Background

The protein encoded by this gene is a member of the AKT, also called PKB, serine/threonine protein kinase family. AKT kinases are known to be regulators of cell signaling in response to insulin and growth factors. They are involved in a wide variety of biological processes including cell proliferation, differentiation, apoptosis, tumorigenesis, as well as glycogen synthesis and glucose uptake. This kinase has been shown to be stimulated by platelet-derived growth factor (PDGF), insulin, and insulin-like growth factor 1 (IGF1). Alternatively splice transcript variants encoding distinct isoforms have been described

Note: This product is for in vitro research use only