

ALDH5A1 Antibody

Catalog No: #37324

Orders: order@signalwayantibody.comSupport: tech@signalwayantibody.com

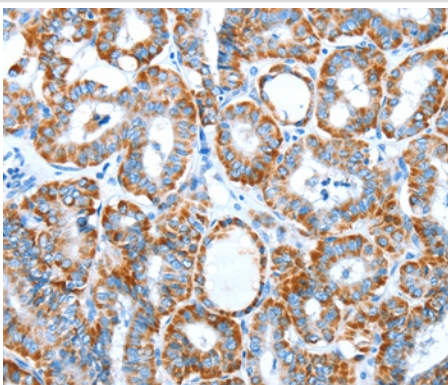
Description

Product Name	ALDH5A1 Antibody
Host Species	Rabbit
Clonality	Polyclonal
Purification	Antigen affinity purification.
Applications	IHC
Species Reactivity	Hu
Specificity	The antibody detects endogenous levels of total ALDH5A1 protein.
Immunogen Type	Peptide
Immunogen Description	Synthetic peptide corresponding to residues near the C terminal of human aldehyde dehydrogenase 5 family, member A1
Target Name	ALDH5A1
Other Names	SSDH; SSADH
Accession No.	Swiss-Prot#: P51649NCBI Gene ID: 7915Gene Accssion: NP_001071
Uniprot	P51649
GeneID	7915;
Concentration	2.4mg/ml
Formulation	Rabbit IgG in pH7.4 PBS, 0.05% NaN ₃ , 40% Glycerol.
Storage	Store at -20°C

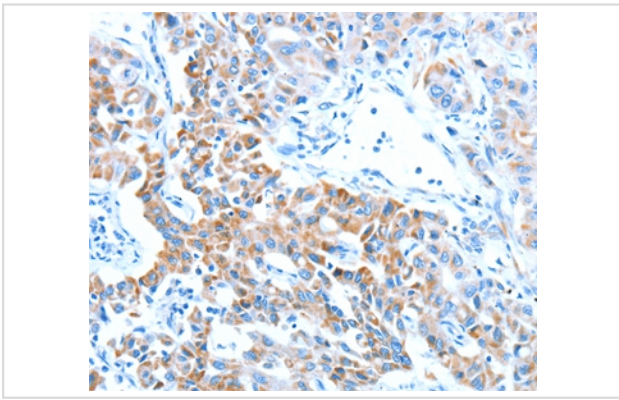
Application Details

Immunohistochemistry: 1:50-1:200

Images



Immunohistochemical analysis of paraffin-embedded Human thyroid cancer tissue using #37324 at dilution 1/60.



Immunohistochemical analysis of paraffin-embedded Human lung cancer tissue using #37324 at dilution 1/60.

Background

This protein belongs to the aldehyde dehydrogenase family of proteins. This gene encodes a mitochondrial NAD(+)-dependent succinic semialdehyde dehydrogenase. A deficiency of this enzyme, known as 4-hydroxybutyricaciduria, is a rare inborn error in the metabolism of the neurotransmitter 4-aminobutyric acid (GABA). In response to the defect, physiologic fluids from patients accumulate GHB, a compound with numerous neuromodulatory properties. Two transcript variants encoding distinct isoforms have been identified for this gene.

Note: This product is for in vitro research use only