

ALG11 Antibody

Catalog No: #37327

Orders: order@signalwayantibody.comSupport: tech@signalwayantibody.com

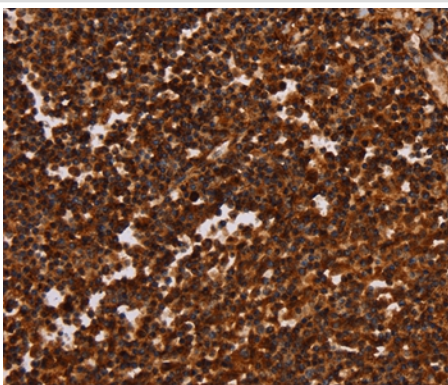
Description

Product Name	ALG11 Antibody
Host Species	Rabbit
Clonality	Polyclonal
Purification	Antigen affinity purification.
Applications	IHC
Species Reactivity	Hu Ms
Specificity	The antibody detects endogenous levels of total ALG11 protein.
Immunogen Type	Peptide
Immunogen Description	Synthetic peptide corresponding to a region derived from internal residues of human ALG11, alpha-1,2-mannosyltransferase
Target Name	ALG11
Other Names	GT8; CDG1P
Accession No.	Swiss-Prot#: Q2TAA5NCBI Gene ID: 440138Gene Accssion: NP_001004127/Q2TAA5
Uniprot	Q2TAA5
GeneID	440138;
Concentration	2.8mg/ml
Formulation	Rabbit IgG in pH7.4 PBS, 0.05% NaN3, 40% Glycerol.
Storage	Store at -20°C

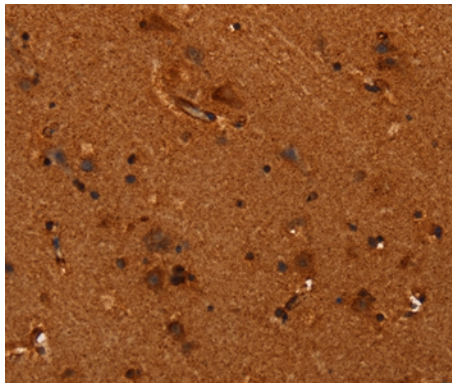
Application Details

Immunohistochemistry: 1:100-1:300

Images



Immunohistochemical analysis of paraffin-embedded Human tonsil tissue using #37327 at dilution 1/40.



Immunohistochemical analysis of paraffin-embedded Human brain tissue using #37327 at dilution 1/40.

Background

This gene encodes a GDP-Man:Man3GlcNAc2-PP-dolichol-alpha1,2-mannosyltransferase which is localized to the cytosolic side of the endoplasmic reticulum (ER) and catalyzes the transfer of the fourth and fifth mannose residue from GDP-mannose (GDP-Man) to Man3GlcNAc2-PP-dolichol and Man4GlcNAc2-PP-dolichol resulting in the production of Man5GlcNAc2-PP-dolichol. Mutations in this gene are associated with congenital disorder of glycosylation type 1p (CDG1P).?

Note: This product is for in vitro research use only