

## ADRA1A Antibody

Catalog No: #37328

Orders: [order@signalwayantibody.com](mailto:order@signalwayantibody.com)Support: [tech@signalwayantibody.com](mailto:tech@signalwayantibody.com)

## Description

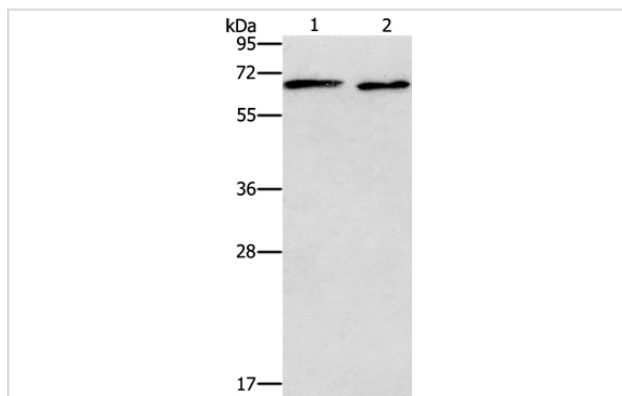
Product Name	ADRA1A Antibody
Host Species	Rabbit
Clonality	Polyclonal
Purification	Antigen affinity purification.
Applications	WB IHC
Species Reactivity	Hu Ms Rt
Specificity	The antibody detects endogenous levels of total ADRA1A protein.
Immunogen Type	Peptide
Immunogen Description	Synthetic peptide corresponding to a region derived from internal residues of human adrenoceptor alpha 1A
Target Name	ADRA1A
Other Names	ADRA1C; ADRA1L1; ALPHA1AAR
Accession No.	Swiss-Prot#: P35348NCBI Gene ID: 148Gene Accssion: NP_000671
Uniprot	P35348
GeneID	148;
SDS-PAGE MW	51kd
Concentration	2.7mg/ml
Formulation	Rabbit IgG in pH7.4 PBS, 0.05% NaN <sub>3</sub> , 40% Glycerol.
Storage	Store at -20°C

## Application Details

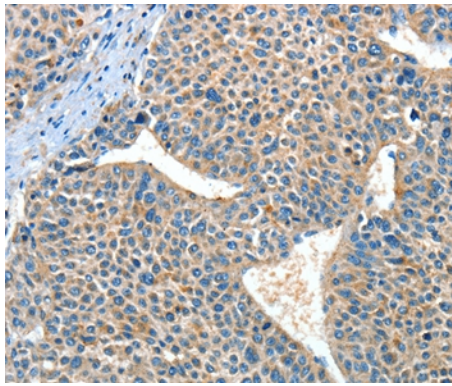
Western blotting: 1:200-1:1000

Immunohistochemistry: 1:50-1:200

## Images



Gel: 10%SDS-PAGE  
 Lysates (from left to right): PC3 and Raji cell  
 Amount of lysate: 40ug per lane  
 Primary antibody: 1/337.5 dilution  
 Secondary antibody dilution: 1/8000  
 Exposure time: 10 seconds



Immunohistochemical analysis of paraffin-embedded Human liver cancer tissue using #37328 at dilution 1/60.

## Background

Alpha-1-adrenergic receptors (alpha-1-ARs) are members of the G protein-coupled receptor superfamily. They activate mitogenic responses and regulate growth and proliferation of many cells. There are 3 alpha-1-AR subtypes: alpha-1A, -1B and -1D, all of which signal through the Gq/11 family of G-proteins and different subtypes show different patterns of activation. This gene encodes alpha-1A-adrenergic receptor. Alternative splicing of this gene generates four transcript variants, which encode four different isoforms with distinct C-termini but having similar ligand binding properties.

Note: This product is for in vitro research use only