

SHROOM2 Antibody

Catalog No: #37340

Orders: order@signalwayantibody.comSupport: tech@signalwayantibody.com

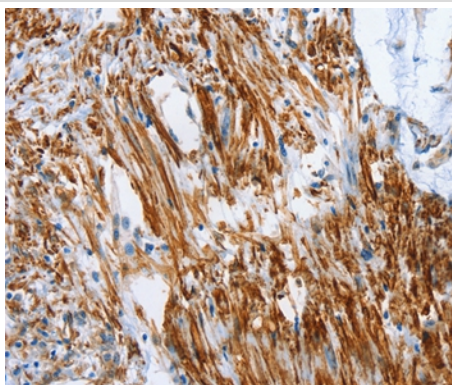
Description

Product Name	SHROOM2 Antibody
Host Species	Rabbit
Clonality	Polyclonal
Purification	Antigen affinity purification.
Applications	IHC
Species Reactivity	Hu
Specificity	The antibody detects endogenous levels of total SHROOM2 protein.
Immunogen Type	Peptide
Immunogen Description	Synthetic peptide corresponding to residues near the N terminal of human shroom family member 2
Target Name	SHROOM2
Other Names	APXL; HSAPXL
Accession No.	Swiss-Prot#: Q13796NCBI Gene ID: 357Gene Accssion: NP_001640
Uniprot	Q13796
GeneID	357;
Concentration	2mg/ml
Formulation	Rabbit IgG in pH7.4 PBS, 0.05% NaN ₃ , 40% Glycerol.
Storage	Store at -20°C

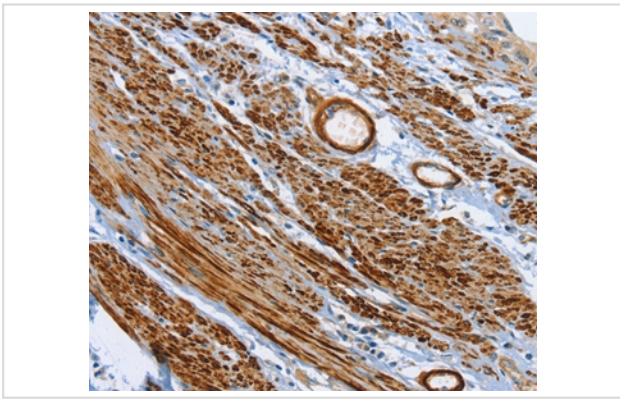
Application Details

Immunohistochemistry: 1:50-1:200

Images



Immunohistochemical analysis of paraffin-embedded Human colon cancer tissue using #37340 at dilution 1/50.



Immunohistochemical analysis of paraffin-embedded Human cervical cancer tissue using #37340 at dilution 1/50.

Background

The protein encoded by this gene shares significant similarities with the apical protein from *Xenopus laevis* which is implicated in amiloride-sensitive sodium channel activity. This gene is a strong candidate gene for ocular albinism type 1 syndrome.

Note: This product is for in vitro research use only