

ARHGEF6 Antibody

Catalog No: #37342

Orders: order@signalwayantibody.comSupport: tech@signalwayantibody.com

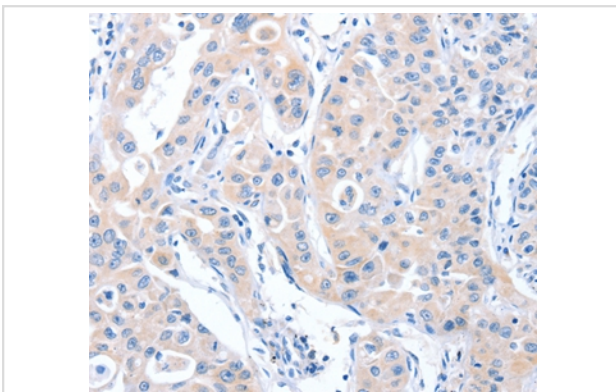
Description

Product Name	ARHGEF6 Antibody
Host Species	Rabbit
Clonality	Polyclonal
Purification	Antigen affinity purification.
Applications	IHC
Species Reactivity	Hu Ms Rt
Specificity	The antibody detects endogenous levels of total ARHGEF6 protein.
Immunogen Type	Peptide
Immunogen Description	Synthetic peptide corresponding to a region derived from internal residues of human Rac/Cdc42 guanine nucleotide exchange factor (GEF) 6
Target Name	ARHGEF6
Other Names	PIXA; COOL2; MRX46; Cool-2; alphaPIX; alpha-PIX
Accession No.	Swiss-Prot#: Q15052NCBI Gene ID: 9459Gene Accssion: NP_004831
Uniprot	Q15052
GeneID	9459;
Concentration	2.6mg/ml
Formulation	Rabbit IgG in pH7.4 PBS, 0.05% NaN ₃ , 40% Glycerol.
Storage	Store at -20°C

Application Details

Immunohistochemistry: 1:50-1:200

Images



Immunohistochemical analysis of paraffin-embedded Human lung cancer tissue using #37342 at dilution 1/70.

Background

Rho GTPases play a fundamental role in numerous cellular processes that are initiated by extracellular stimuli that work through G protein coupled receptors. The encoded protein belongs to a family of cytoplasmic proteins that activate the Ras-like family of Rho proteins by exchanging bound GDP

for GTP. It may form a complex with G proteins and stimulate Rho-dependent signals. This protein is activated by PI3-kinase. Mutations in this gene can cause X-chromosomal non-specific mental retardation.

Note: This product is for in vitro research use only