

ARFGEF2 Antibody

Catalog No: #37349

Orders: order@signalwayantibody.com

Support: tech@signalwayantibody.com

Description

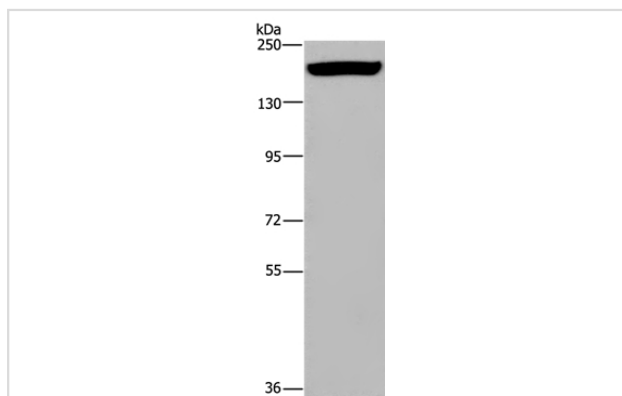
Product Name	ARFGEF2 Antibody
Host Species	Rabbit
Clonality	Polyclonal
Purification	Antigen affinity purification.
Applications	WB IHC
Species Reactivity	Hu Ms
Specificity	The antibody detects endogenous levels of total ARFGEF2 protein.
Immunogen Type	Peptide
Immunogen Description	Synthetic peptide corresponding to a region derived from internal residues of human ADP-ribosylation factor guanine nucleotide-exchange factor 2 (brefeldin A-inhibited)
Target Name	ARFGEF2
Other Names	BIG2; PVNH2; dJ1164110.1
Accession No.	Swiss-Prot#: Q9Y6D5NCBI Gene ID: 10564Gene Accsson: NP_006411
Uniprot	Q9Y6D5
GeneID	10564;
SDS-PAGE MW	202kd
Concentration	3.4mg/ml
Formulation	Rabbit IgG in pH7.4 PBS, 0.05% NaN ₃ , 40% Glycerol.
Storage	Store at -20°C

Application Details

Western blotting: 1:200-1:1000

Immunohistochemistry: 1:50-1:200

Images



Gel: 6%SDS-PAGE

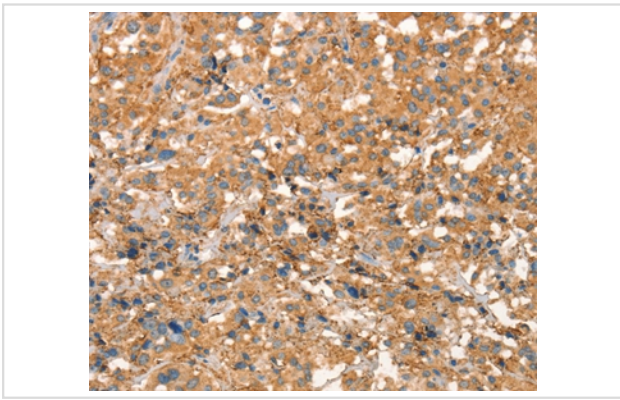
Lysates (from left to right): Mouse heart tissue

Amount of lysate: 50ug per lane

Primary antibody: 1/200 dilution

Secondary antibody dilution: 1/8000

Exposure time: 5 minutes



Immunohistochemical analysis of paraffin-embedded Human thyroid cancer tissue using #37349 at dilution 1/50.

Background

ADP-ribosylation factors (ARFs) play an important role in intracellular vesicular trafficking. The protein encoded by this gene is involved in the activation of ARFs by accelerating replacement of bound GDP with GTP and is involved in Golgi transport. It contains a Sec7 domain, which may be responsible for its guanine-nucleotide exchange activity and also brefeldin A inhibition.

Note: This product is for in vitro research use only