

## ARFRP1 Antibody

Catalog No: #37350

Orders: order@signalwayantibody.com

Support: tech@signalwayantibody.com

## Description

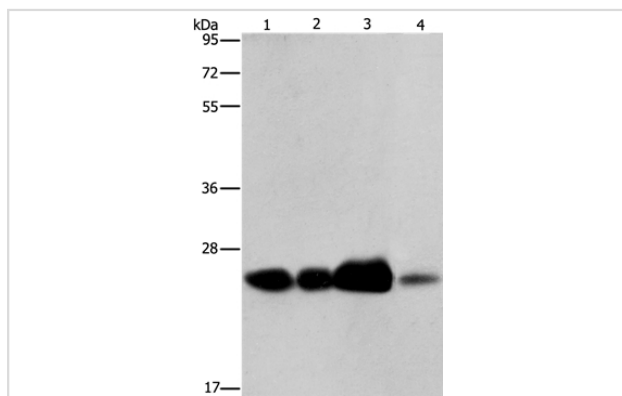
Product Name	ARFRP1 Antibody
Host Species	Rabbit
Clonality	Polyclonal
Purification	Antigen affinity purification.
Applications	WB IHC
Species Reactivity	Hu Ms Rt
Specificity	The antibody detects endogenous levels of total ARFRP1 protein.
Immunogen Type	Peptide
Immunogen Description	Synthetic peptide corresponding to residues near the C terminal of human ADP-ribosylation factor related protein 1
Target Name	ARFRP1
Other Names	ARP; Arp1; ARL18
Accession No.	Swiss-Prot#: Q13795NCBI Gene ID: 10139Gene Accssion: NP_003215
Uniprot	Q13795
GeneID	10139;
SDS-PAGE MW	23kd
Concentration	3.3mg/ml
Formulation	Rabbit IgG in pH7.4 PBS, 0.05% NaN <sub>3</sub> , 40% Glycerol.
Storage	Store at -20°C

## Application Details

Western blotting: 1:500-1:2000

Immunohistochemistry: 1:25-1:100

## Images



Gel: 8%SDS-PAGE

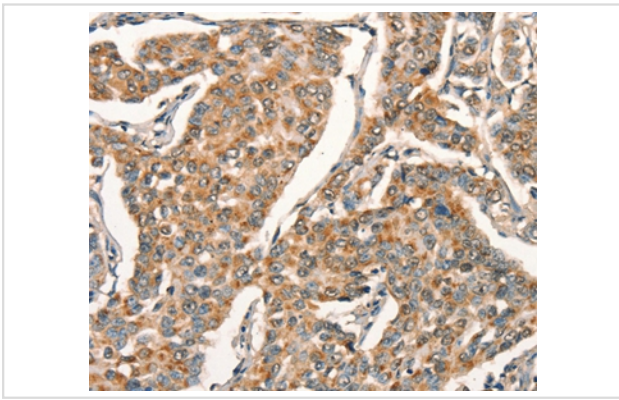
Lysates (from left to right): 293T cell and human fetal liver tissue, human cervical cancer and fetal muscle tissue

Amount of lysate: 40ug per lane

Primary antibody: 1/800 dilution

Secondary antibody dilution: 1/8000

Exposure time: 40 seconds



Immunohistochemical analysis of paraffin-embedded Human breast cancer tissue using #37350 at dilution 1/25.

## Background

The protein encoded by this gene is a membrane-associated GTP-ase which localizes to the plasma membrane and is related to the ADP-ribosylation factor (ARF) and ARF-like (ARL) proteins. This gene plays a role in membrane trafficking between the trans-Golgi network and endosomes. Alternatively spliced transcript variants encoding different isoforms have been identified.

Note: This product is for in vitro research use only