

ADPRHL2 Antibody

Catalog No: #37352

Orders: order@signalwayantibody.comSupport: tech@signalwayantibody.com

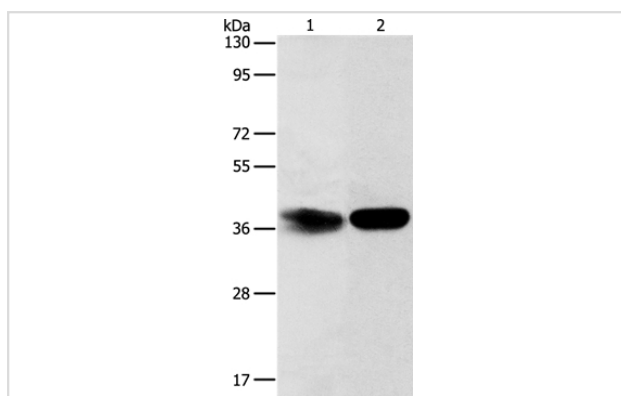
Description

Product Name	ADPRHL2 Antibody
Host Species	Rabbit
Clonality	Polyclonal
Purification	Antigen affinity purification.
Applications	WB
Species Reactivity	Hu Ms
Specificity	The antibody detects endogenous levels of total ADPRHL2 protein.
Immunogen Type	Peptide
Immunogen Description	Synthetic peptide corresponding to residues near the C terminal of human ADP-ribosylhydrolase like 2
Target Name	ADPRHL2
Other Names	ARH3
Accession No.	Swiss-Prot#: Q9NX46NCBI Gene ID: 54936Gene Accsion: NP_060295
Uniprot	Q9NX46
GeneID	54936;
SDS-PAGE MW	39kd
Concentration	0.8mg/ml
Formulation	Rabbit IgG in pH7.4 PBS, 0.05% NaN ₃ , 40% Glycerol.
Storage	Store at -20°C

Application Details

Western blotting: 1:200-1:1000

Images



Gel: 12%SDS-PAGE

Lysates (from left to right): HeLa cell and mouse kidney tissue

Amount of lysate: 40ug per lane

Primary antibody: 1/500 dilution

Secondary antibody dilution: 1/8000

Exposure time: 2 minutes

Background

This gene encodes a member of the ADP-ribosylglycohydrolase family. The encoded enzyme catalyzes the removal of ADP-ribose from ADP-ribosylated proteins. This enzyme localizes to the mitochondria, in addition to the nucleus and cytoplasm. Poly(ADP-ribose) synthesized after

DNA damage is only present transiently and is rapidly degraded by poly(ADP-ribose) glycohydrolase. Poly(ADP-ribose) metabolism may be required for maintenance of the normal function of neuronal cells. Generates ADP-ribose from poly-(ADP-ribose), but does not hydrolyze ADP-ribose-arginine, -cysteine, -diphthamide, or -asparagine bonds. Due to catalytic inactivity of PARG mitochondrial isoforms, ARH3 is the only PAR hydrolyzing enzyme in mitochondria.

Note: This product is for in vitro research use only