

ART4 Antibody

Catalog No: #37354

Orders: order@signalwayantibody.comSupport: tech@signalwayantibody.com

Description

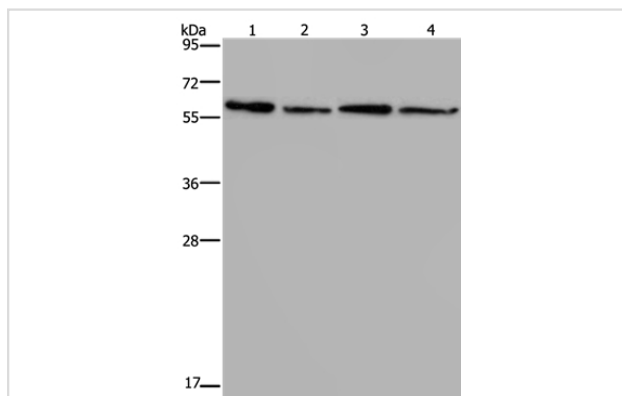
Product Name	ART4 Antibody
Host Species	Rabbit
Clonality	Polyclonal
Purification	Antigen affinity purification.
Applications	WB IHC
Species Reactivity	Hu Ms
Specificity	The antibody detects endogenous levels of total ART4 protein.
Immunogen Type	Peptide
Immunogen Description	Synthetic peptide corresponding to a region derived from internal residues of human ADP-ribosyltransferase 4
Target Name	ART4
Other Names	DO; DOK1; ARTC4; CD297
Accession No.	Swiss-Prot#: Q93070NCBI Gene ID: 420Gene Accssion: NP_066549
Uniprot	Q93070
GeneID	420;
SDS-PAGE MW	36kd
Concentration	2mg/ml
Formulation	Rabbit IgG in pH7.4 PBS, 0.05% NaN ₃ , 40% Glycerol.
Storage	Store at -20°C

Application Details

Western blotting: 1:500-1:2000

Immunohistochemistry: 1:25-1:100

Images



Gel: 10%SDS-PAGE

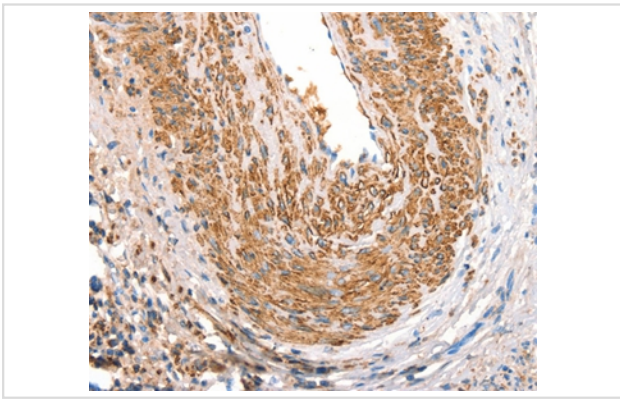
Lysates (from left to right): Mouse kidney, liver, heart and brain tissue

Amount of lysate: 40ug per lane

Primary antibody: 1/667 dilution

Secondary antibody dilution: 1/8000

Exposure time: 2 minutes



Immunohistochemical analysis of paraffin-embedded Human cervical cancer tissue using #37354 at dilution 1/30.

Background

This gene encodes a protein that contains a mono-ADP-ribosylation (ART) motif. It is a member of the ADP-ribosyltransferase gene family but enzymatic activity has not been demonstrated experimentally. Antigens of the Dombrock blood group system are located on the gene product, which is glycosylphosphatidylinositol-anchored to the erythrocyte membrane. Allelic variants, some of which lead to adverse transfusion reactions, are known.

Note: This product is for in vitro research use only