

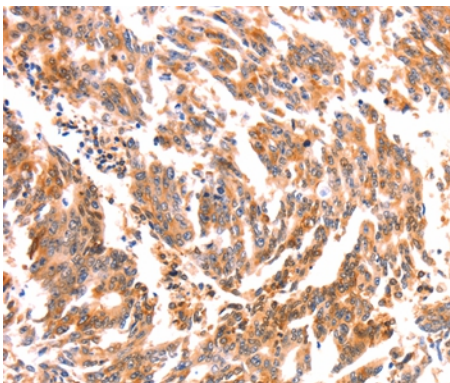
Description

Product Name	NES Antibody
Host Species	Rabbit
Clonality	Polyclonal
Purification	Antigen affinity purification.
Applications	IHC
Species Reactivity	Hu
Specificity	The antibody detects endogenous levels of total NES protein.
Immunogen Type	Peptide
Immunogen Description	Synthetic peptide corresponding to residues near the C terminal of human nestin
Target Name	NES
Other Names	Nbla00170
Accession No.	Swiss-Prot#: P48681NCBI Gene ID: 10763Gene Accssion: NP_006608
Uniprot	P48681
GeneID	10763;
Concentration	1.2mg/ml
Formulation	Rabbit IgG in pH7.4 PBS, 0.05% NaN ₃ , 40% Glycerol.
Storage	Store at -20°C

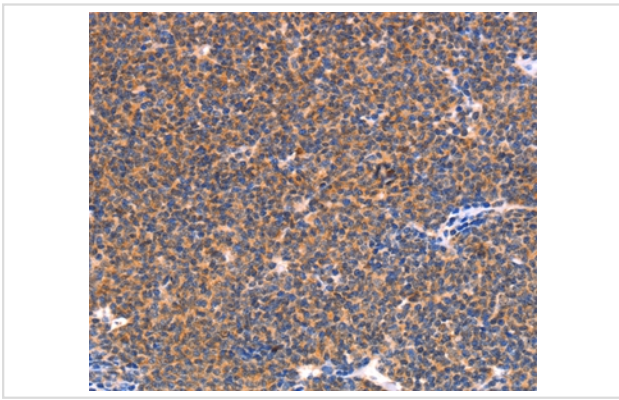
Application Details

Immunohistochemistry: 1:25-1:100

Images



Immunohistochemical analysis of paraffin-embedded Human gastric cancer tissue using #37358 at dilution 1/30.



Immunohistochemical analysis of paraffin-embedded Human lymphoma cancer tissue using #37358 at dilution 1/30.

Background

Nestin is a type IV intermediate filament protein expressed by neuroepithelial stem cells and which has been proposed to represent a marker for putative islet stem cells. It is a high molecular weight protein with a terminus greater than 500 residues. Nestins are expressed by several types of cells during development, mostly in dividing cells of the Central Nervous System, Peripheral Nervous System and myogenic tissues. It also represents the progenitor population of neural stem cell origin. The role of nestin in dynamic cells, particularly structural organization of the cell, appears strictly regulated by phosphorylation, especially its integration into heterogeneous intermediate filaments together with vimentin or internexin. Nestin has recently received attention as a marker for detecting newly formed endothelial cells.

Note: This product is for in vitro research use only