

## HTRA3 Antibody

Catalog No: #37361

Orders: [order@signalwayantibody.com](mailto:order@signalwayantibody.com)Support: [tech@signalwayantibody.com](mailto:tech@signalwayantibody.com)

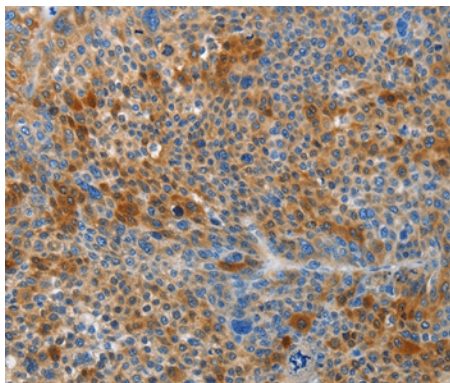
## Description

Product Name	HTRA3 Antibody
Host Species	Rabbit
Clonality	Polyclonal
Purification	Antigen affinity purification.
Applications	IHC
Species Reactivity	Hu
Specificity	The antibody detects endogenous levels of total HTRA3 protein.
Immunogen Type	Peptide
Immunogen Description	Synthetic peptide corresponding to a region derived from internal residues of human HtrA serine peptidase 3
Target Name	HTRA3
Other Names	Prsp; Tasp
Accession No.	Swiss-Prot#: P83110NCBI Gene ID: 94031Gene Accssion: NP_444272
Uniprot	P83110
GeneID	94031;
Concentration	1.7mg/ml
Formulation	Rabbit IgG in pH7.4 PBS, 0.05% NaN <sub>3</sub> , 40% Glycerol.
Storage	Store at -20°C

## Application Details

Immunohistochemistry: 1:50-1:200

## Images



Immunohistochemical analysis of paraffin-embedded Human liver cancer tissue using #37361 at dilution 1/45.

## Background

HtrA3, also known as PRSP (pregnancy-related serine protease), is a 453 amino acid secreted protein that contains one PDZ domain, one Kazal-like domain and one IGF1BP N-terminal domain. Widely expressed with particularly high expression in ovary, heart, placenta and bladder, HtrA3 functions as a probable serine protease that is thought to play an important role in placental development. HtrA3 is downregulated in ovarian tumors, suggesting an alternative role in tumor suppression. HtrA3 exists as two alternatively spliced isoforms, designated short and long. The gene encoding HtrA3 maps

to human chromosome 4, which encodes nearly 6% of the human genome and has the largest gene deserts (regions of the genome with no protein encoding genes) of all of the human chromosomes.

---

Note: This product is for in vitro research use only