

GIPR Antibody

Catalog No: #37370

Orders: order@signalwayantibody.com

Support: tech@signalwayantibody.com

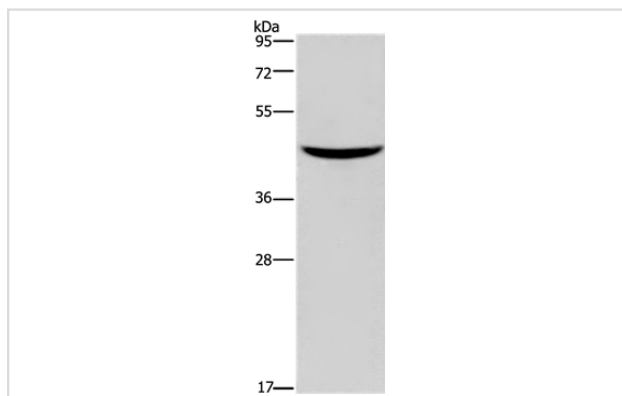
Description

Product Name	GIPR Antibody
Host Species	Rabbit
Clonality	Polyclonal
Purification	Antigen affinity purification.
Applications	WB
Species Reactivity	Hu Ms
Specificity	The antibody detects endogenous levels of total GIPR protein.
Immunogen Type	Peptide
Immunogen Description	Synthetic peptide corresponding to residues near the C terminal of human gastric inhibitory polypeptide receptor
Target Name	GIPR
Other Names	PGQTL2
Accession No.	Swiss-Prot#: P48546NCBI Gene ID: 2696Gene Accssion: NP_000155
Uniprot	P48546
GeneID	2696;
SDS-PAGE MW	53kd
Concentration	1.1mg/ml
Formulation	Rabbit IgG in pH7.4 PBS, 0.05% NaN ₃ , 40% Glycerol.
Storage	Store at -20°C

Application Details

Western blotting: 1:200-1:1000

Images



Gel: 10%SDS-PAGE
 Lysates (from left to right): Mouse pancreas tissue
 Amount of lysate: 40ug per lane
 Primary antibody: 1/150 dilution
 Secondary antibody dilution: 1/8000
 Exposure time: 10 seconds

Background

This gene encodes a G-protein coupled receptor for gastric inhibitory polypeptide (GIP), which was originally identified as an activity in gut extracts

that inhibited gastric acid secretion and gastrin release, but subsequently was demonstrated to stimulate insulin release in the presence of elevated glucose. Mice lacking this gene exhibit higher blood glucose levels with impaired initial insulin response after oral glucose load. Defect in this gene thus may contribute to the pathogenesis of diabetes.

Note: This product is for in vitro research use only