

EPHA7 Antibody

Catalog No: #37371

Orders: order@signalwayantibody.comSupport: tech@signalwayantibody.com

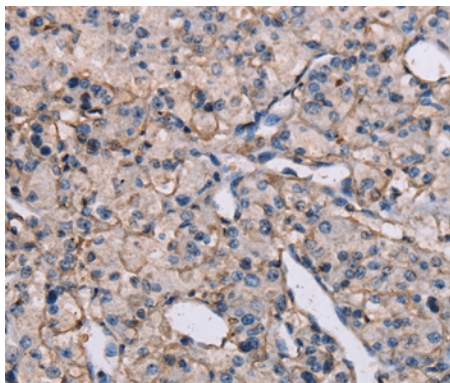
Description

| | |
|-----------------------|--|
| Product Name | EPHA7 Antibody |
| Host Species | Rabbit |
| Clonality | Polyclonal |
| Purification | Antigen affinity purification. |
| Applications | IHC |
| Species Reactivity | Hu Ms Rt |
| Specificity | The antibody detects endogenous levels of total EPHA7 protein. |
| Immunogen Type | Peptide |
| Immunogen Description | Synthetic peptide corresponding to residues near the C terminal of human EPH receptor A7 |
| Target Name | EPHA7 |
| Other Names | EHK3; EK11; EHK-3; HEK11 |
| Accession No. | Swiss-Prot#: Q15375NCBI Gene ID: 2045Gene Accssion: NP_004431/Q15375 |
| Uniprot | Q15375 |
| GeneID | 2045; |
| Concentration | 1.3mg/ml |
| Formulation | Rabbit IgG in pH7.4 PBS, 0.05% NaN ₃ , 40% Glycerol. |
| Storage | Store at -20°C |

Application Details

Immunohistochemistry: 1:25-1:100

Images



Immunohistochemical analysis of paraffin-embedded Human prostate cancer tissue using #37371 at dilution 1/20.

Background

This gene belongs to the ephrin receptor subfamily of the protein-tyrosine kinase family. EPH and EPH-related receptors have been implicated in mediating developmental events, particularly in the nervous system. Receptors in the EPH subfamily typically have a single kinase domain and an extracellular region containing a Cys-rich domain and 2 fibronectin type III repeats. The ephrin receptors are divided into 2 groups based on the similarity of their extracellular domain sequences and their affinities for binding ephrin-A and ephrin-B ligands. Increased expression of this gene is

associated with multiple forms of carcinoma. Alternative splicing results in multiple transcript variants.?

Note: This product is for in vitro research use only