

PIP5K1C Antibody

Catalog No: #37375

Orders: order@signalwayantibody.com

Support: tech@signalwayantibody.com

Description

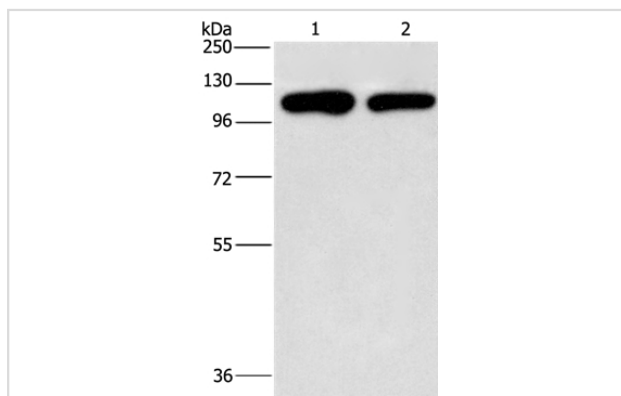
Product Name	PIP5K1C Antibody
Host Species	Rabbit
Clonality	Polyclonal
Purification	Antigen affinity purification.
Applications	WB IHC
Species Reactivity	Hu
Specificity	The antibody detects endogenous levels of total PIP5K1C protein.
Immunogen Type	Peptide
Immunogen Description	Synthetic peptide corresponding to residues near the C terminal of human phosphatidylinositol-4-phosphate 5-kinase, type I, gamma
Target Name	PIP5K1C
Other Names	LCSS3; PIPKIg_v4; PIP5Kgamma; PIP5K-GAMMA
Accession No.	Swiss-Prot#: O60331NCBI Gene ID: 23396Gene Accssion: NP_001182662
Uniprot	O60331
GeneID	23396;
SDS-PAGE MW	73kd
Concentration	0.9mg/ml
Formulation	Rabbit IgG in pH7.4 PBS, 0.05% NaN ₃ , 40% Glycerol.
Storage	Store at -20°C

Application Details

Western blotting: 1:500-1:2000

Immunohistochemistry: 1:25-1:100

Images



Gel: 10%SDS-PAGE

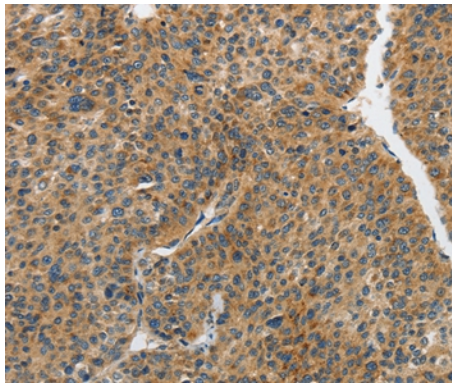
Lysates (from left to right): A431 and hela cell

Amount of lysate: 40ug per lane

Primary antibody: 1/500 dilution

Secondary antibody dilution: 1/8000

Exposure time: 2 minutes



Immunohistochemical analysis of paraffin-embedded Human liver cancer tissue using #37375 at dilution 1/25.

Background

This locus encodes a type I phosphatidylinositol 4-phosphate 5-kinase. The encoded protein catalyzes phosphorylation of phosphatidylinositol 4-phosphate, producing phosphatidylinositol 4,5-bisphosphate. This enzyme is found at synapses and has been found to play roles in endocytosis and cell migration. Mutations at this locus have been associated with lethal congenital contractural syndrome. Alternatively spliced transcript variants encoding different isoforms have been described.

Note: This product is for in vitro research use only