

NEK1 Antibody

Catalog No: #37377

Orders: order@signalwayantibody.comSupport: tech@signalwayantibody.com

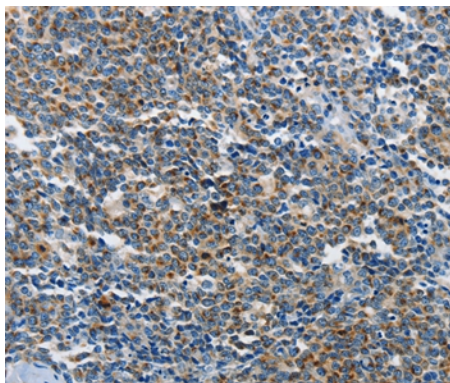
Description

Product Name	NEK1 Antibody
Host Species	Rabbit
Clonality	Polyclonal
Purification	Antigen affinity purification.
Applications	IHC
Species Reactivity	Hu Ms
Specificity	The antibody detects endogenous levels of total NEK1 protein.
Immunogen Type	Peptide
Immunogen Description	Synthetic peptide corresponding to a region derived from internal residues of human NIMA-related kinase 1
Target Name	NEK1
Other Names	SRPS2; SRPS2A; NY-REN-55
Accession No.	Swiss-Prot#: Q96PY6NCBI Gene ID: 4750Gene Accssion: NP_001186326
Uniprot	Q96PY6
GeneID	4750;
Concentration	1mg/ml
Formulation	Rabbit IgG in pH7.4 PBS, 0.05% NaN ₃ , 40% Glycerol.
Storage	Store at -20°C

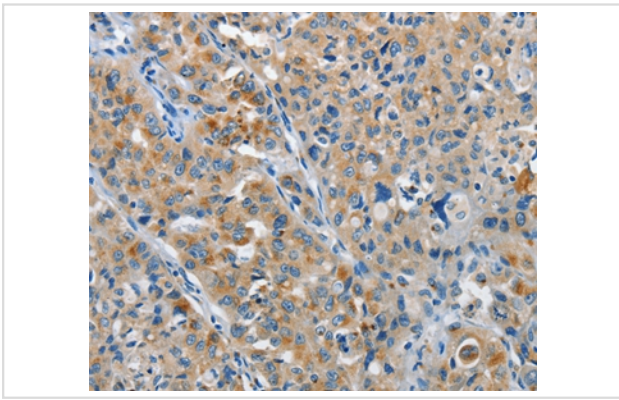
Application Details

Immunohistochemistry: 1:25-1:100

Images



Immunohistochemical analysis of paraffin-embedded Human lymphoma tissue using #37377 at dilution 1/25.



Immunohistochemical analysis of paraffin-embedded Human lung cancer tissue using #37377 at dilution 1/25.

Background

The protein encoded by this gene is a serine/threonine kinase involved in cell cycle regulation. The encoded protein is found in a centrosomal complex with FEZ1, a neuronal protein that plays a role in axonal development. Defects in this gene are a cause of polycystic kidney disease (PKD). Several transcript variants encoding different isoforms have been found for this gene.

Note: This product is for in vitro research use only