

NEK5 Antibody

Catalog No: #37379

Orders: order@signalwayantibody.comSupport: tech@signalwayantibody.com

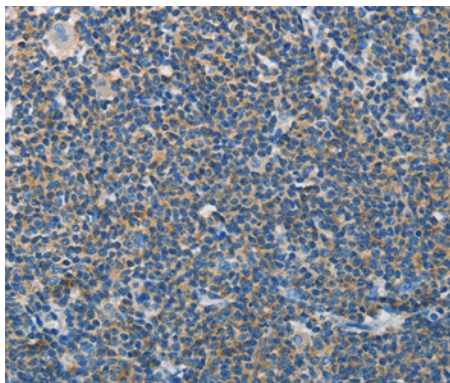
Description

Product Name	NEK5 Antibody
Host Species	Rabbit
Clonality	Polyclonal
Purification	Antigen affinity purification.
Applications	IHC
Species Reactivity	Hu
Specificity	The antibody detects endogenous levels of total NEK5 protein.
Immunogen Type	Peptide
Immunogen Description	Synthetic peptide corresponding to a region derived from internal residues of human NIMA-related kinase 5
Target Name	NEK5
Other Names	MGC75495; NEK5; Never in mitosis A-related kinase 5;
Accession No.	Swiss-Prot#: Q6P3R8NCBI Gene ID: 341676Gene Accssion: NP_954983
Uniprot	Q6P3R8
GeneID	341676;
Concentration	2.4mg/ml
Formulation	Rabbit IgG in pH7.4 PBS, 0.05% NaN ₃ , 40% Glycerol.
Storage	Store at -20°C

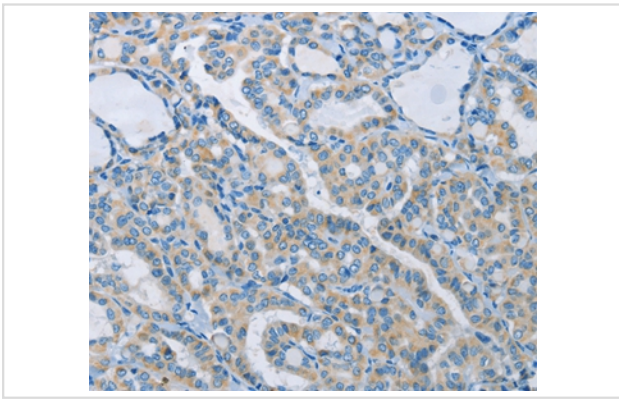
Application Details

Immunohistochemistry: 1:50-1:200

Images



Immunohistochemical analysis of paraffin-embedded Human lymphoma tissue using #37379 at dilution 1/60.



Immunohistochemical analysis of paraffin-embedded Human thyroid cancer tissue using #37379 at dilution 1/60.

Background

Nek5 (NimA-related protein kinase 5) is a 708 amino acid protein that is related to NIMA, a protein that was originally discovered in *Aspergillus nidulans* and is necessary for entry into mitosis. One of several members of the Set/Thr protein kinase super family, Nek5 contains one protein kinase domain through which it catalyzes the ATP-dependent phosphorylation of target proteins. Like NIMA, Nek5 may be involved in mitotic regulation and cell cycle control.

Note: This product is for in vitro research use only