

NEK10 Antibody

Catalog No: #37381

Orders: order@signalwayantibody.com

Support: tech@signalwayantibody.com

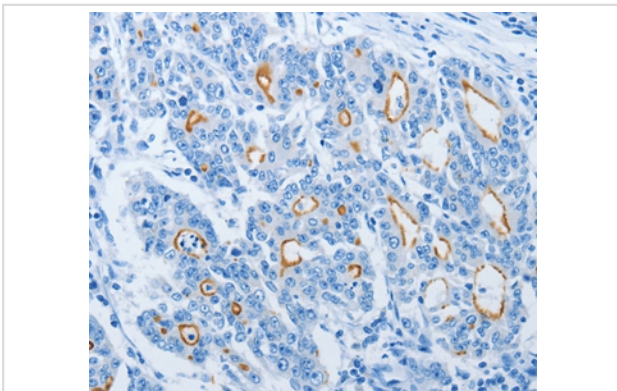
Description

Product Name	NEK10 Antibody
Host Species	Rabbit
Clonality	Polyclonal
Purification	Antigen affinity purification.
Applications	IHC
Species Reactivity	Hu
Specificity	The antibody detects endogenous levels of total NEK10 protein.
Immunogen Type	Peptide
Immunogen Description	Synthetic peptide corresponding to a region derived from internal residues of human NIMA-related kinase 10
Target Name	NEK10
Other Names	FLJ32685; NEK10; Never in mitosis A-related kinase 10;
Accession No.	Swiss-Prot#: Q6ZWH5NCBI Gene ID: 152110Gene Accssion: NP_955379
Uniprot	Q6ZWH5
GeneID	152110;
Concentration	0.7mg/ml
Formulation	Rabbit IgG in pH7.4 PBS, 0.05% NaN ₃ , 40% Glycerol.
Storage	Store at -20°C

Application Details

Immunohistochemistry: 1:25-1:100

Images



Immunohistochemical analysis of paraffin-embedded Human gastric cancer tissue using #37381 at dilution 1/20.

Background

Nek10 (NIMA (never in mitosis gene a)-related kinase 10) is a 712 amino acid protein belonging to the NIMA subfamily of kinases and functions as a magnesium-dependent serine/threonine protein kinase. Kinases of the NIMA subfamily are typically involved in genotoxic stress response and DNA replication. Nek10 is expressed in brain and may contain a 14-3-3 interaction motif in its C-terminus. The gene encoding Nek10 has been localized to a region on chromosome 3 that may contribute to vulnerability to addictions. Due to alternative splicing events, three isoforms exist for Nek10.

Note: This product is for in vitro research use only