

## GAPDHS Antibody

Catalog No: #37385

Orders: order@signalwayantibody.com

Support: tech@signalwayantibody.com

## Description

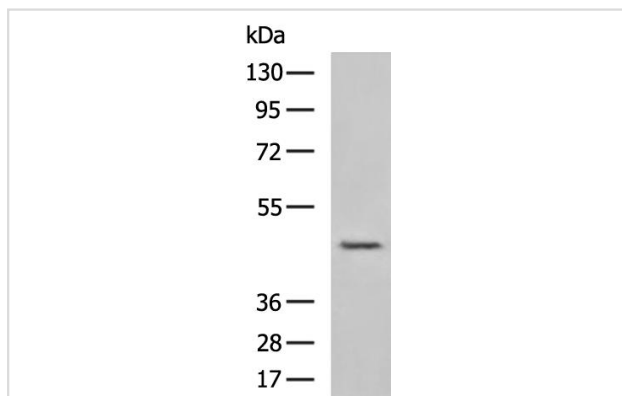
Product Name	GAPDHS Antibody
Host Species	Rabbit
Clonality	Polyclonal
Purification	Antigen affinity purification.
Applications	WB IHC
Species Reactivity	Hu
Specificity	The antibody detects endogenous levels of total GAPDHS protein.
Immunogen Type	Peptide
Immunogen Description	Synthetic peptide of human GAPDHS
Target Name	GAPDHS
Other Names	GAPD2; GAPDS; HSD-35; GAPDH-2
Accession No.	Swiss-Prot#: O14556NCBI Gene ID: 26330Gene Accssion: NP_055179
Uniprot	O14556
GeneID	26330;
SDS-PAGE MW	45kd
Concentration	0.9 mg/ml
Formulation	Rabbit IgG in pH7.4 PBS, 0.05% NaN <sub>3</sub> , 40% Glycerol.
Storage	Store at -20°C

## Application Details

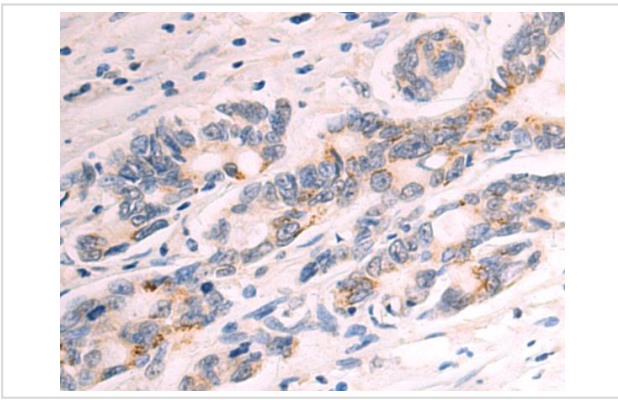
WB 1:200-1:1000

IHC 1:50-1:100

## Images



Gel: 8%SDS-PAGE  
Lysate: 40 ug  
Lane: A549 cell lysate  
Primary antibody: (GAPDHS Antibody) at dilution 1/400  
Secondary antibody: Goat anti rabbit IgG at 1/5000 dilution  
Exposure time: 2 minutes



The image on the left is immunohistochemistry of paraffin-embedded Human colorectal cancer tissue using (GAPDHS Antibody) at dilution 1/50

## Background

This gene encodes a protein belonging to the glyceraldehyde-3-phosphate dehydrogenase family of enzymes that play an important role in carbohydrate metabolism. Like its somatic cell counterpart, this sperm-specific enzyme functions in a nicotinamide adenine dinucleotide-dependent manner to remove hydrogen and add phosphate to glyceraldehyde 3-phosphate to form 1,3-diphosphoglycerate. During spermiogenesis, this enzyme may play an important role in regulating the switch between different energy-producing pathways, and it is required for sperm motility and male fertility.

Note: This product is for in vitro research use only