

NPAP1 Antibody

Catalog No: #37386

Orders: order@signalwayantibody.comSupport: tech@signalwayantibody.com

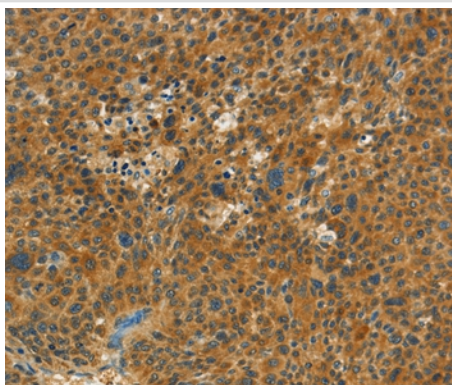
Description

Product Name	NPAP1 Antibody
Host Species	Rabbit
Clonality	Polyclonal
Purification	Antigen affinity purification.
Applications	IHC
Species Reactivity	Hu
Specificity	The antibody detects endogenous levels of total NPAP1 protein.
Immunogen Type	Peptide
Immunogen Description	Synthetic peptide corresponding to a region derived from internal residues of human nuclear pore associated protein 1
Target Name	NPAP1
Other Names	C15orf2
Accession No.	Swiss-Prot#: Q9NZP6NCBI Gene ID: 23742Gene Accsson: NP_061831
Uniprot	Q9NZP6
GeneID	23742;
Concentration	2.9mg/ml
Formulation	Rabbit IgG in pH7.4 PBS, 0.05% NaN ₃ , 40% Glycerol.
Storage	Store at -20°C

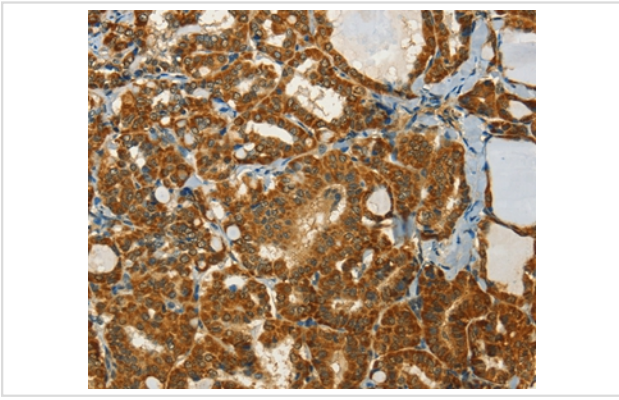
Application Details

Immunohistochemistry: 1:50-1:200

Images



Immunohistochemical analysis of paraffin-embedded Human liver cancer tissue using #37386 at dilution 1/60.



Immunohistochemical analysis of paraffin-embedded Human thyroid cancer tissue using #37386 at dilution 1/60.

Background

This gene is located in the Prader-Willi syndrome region on chromosome 15. This gene is biallelically expressed in adult testis and brain but is paternally imprinted in fetal brain. Defects in this gene may be associated with Prader-Willi syndrome.

Note: This product is for in vitro research use only