

SERPINA9 Antibody

Catalog No: #37387

Orders: order@signalwayantibody.com

Support: tech@signalwayantibody.com

Description

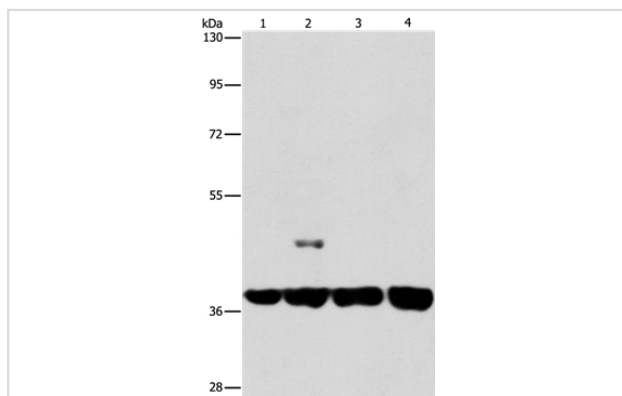
Product Name	SERPINA9 Antibody
Host Species	Rabbit
Clonality	Polyclonal
Purification	Antigen affinity purification.
Applications	WB IHC
Species Reactivity	Hu
Specificity	The antibody detects endogenous levels of total SERPINA9 protein.
Immunogen Type	Peptide
Immunogen Description	Synthetic peptide corresponding to a region derived from internal residues of human serpin peptidase inhibitor, clade A (alpha-1 antiproteinase, antitrypsin), member 9
Target Name	SERPINA9
Other Names	GCET1; SERPINA11; SERPINA11b
Accession No.	Swiss-Prot#: Q86WD7NCBI Gene ID: 327657Gene Accssion: NP_001035983
Uniprot	Q86WD7
GeneID	327657;
SDS-PAGE MW	47kd
Concentration	2.8mg/ml
Formulation	Rabbit IgG in pH7.4 PBS, 0.05% NaN ₃ , 40% Glycerol.
Storage	Store at -20°C

Application Details

Western blotting: 1:500-1:2000

Immunohistochemistry: 1:50-1:200

Images



Gel: 8%SDS-PAGE

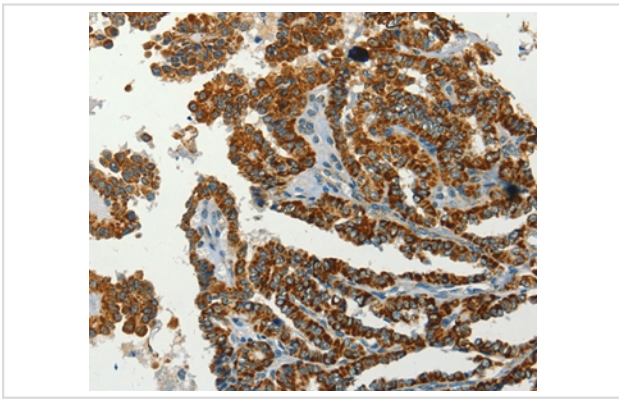
Lysates (from left to right): 293T and 231 cell, U937 and Raji cell

Amount of lysate: 40ug per lane

Primary antibody: 1/350 dilution

Secondary antibody dilution: 1/8000

Exposure time: 10 seconds



Immunohistochemical analysis of paraffin-embedded Human thyroid cancer tissue using #37387 at dilution 1/60.

Background

Serpin A9, also known as centerin or GCET1, is a protein that in humans is encoded by the SERPINA9 gene, located on chromosome 14q32.1.[1] Serpin A9 is a member of the serpin family of serine protease inhibitors. The expression of SERPINA9 is restricted to germinal center B cells and lymphoid malignancies. SERPINA9 is likely to function in vivo in the germinal center as an efficient inhibitor of trypsin-like proteases. Highly expressed in normal germinal center (GC) B-cells and GC B-cell-derived malignancies.

Note: This product is for in vitro research use only