

## MARC1 Antibody

Catalog No: #37390

Orders: [order@signalwayantibody.com](mailto:order@signalwayantibody.com)Support: [tech@signalwayantibody.com](mailto:tech@signalwayantibody.com)

## Description

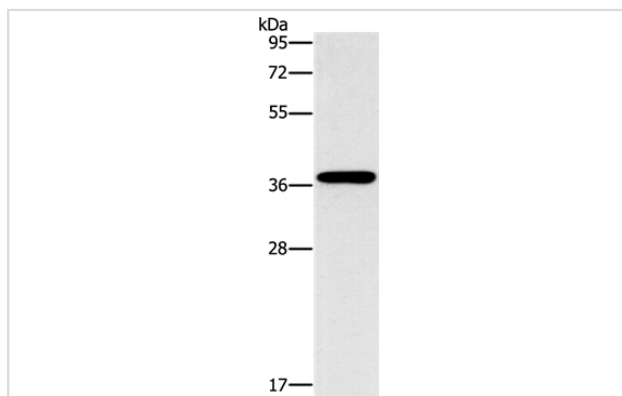
Product Name	MARC1 Antibody
Host Species	Rabbit
Clonality	Polyclonal
Purification	Antigen affinity purification.
Applications	WB IHC
Species Reactivity	Hu
Specificity	The antibody detects endogenous levels of total MARC1 Antibody.
Immunogen Type	Peptide
Immunogen Description	Synthetic peptide corresponding to a region derived from internal residues of human mitochondrial amidoxime reducing component 1
Target Name	MARC1
Other Names	MOSC1
Accession No.	Swiss-Prot#: Q5VT66?NCBI Gene ID: 64757Gene Accssion: NP_073583
Uniprot	Q5VT66
GeneID	64757;
SDS-PAGE MW	37kd
Concentration	2.7mg/ml
Formulation	Rabbit IgG in pH7.4 PBS, 0.05% NaN <sub>3</sub> , 40% Glycerol.
Storage	Store at -20°C

## Application Details

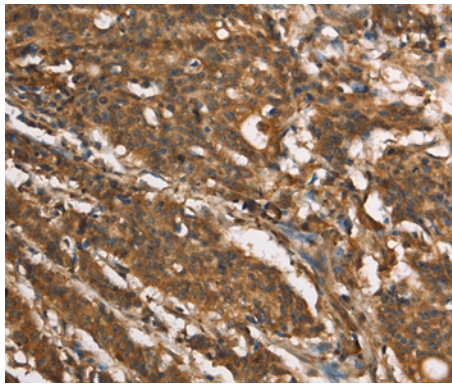
Western blotting: 1:500-1:2000

Immunohistochemistry: 1:50-1:200

## Images



Gel: 10%SDS-PAGE  
 Lysate: 40ug HepG2 cell  
 Primary antibody: 1/1400 dilution  
 Secondary antibody dilution: 1/8000  
 Exposure time: 40 seconds



Immunohistochemical analysis of paraffin-embedded Human gastric cancer tissue using #37390 at dilution 1/40.

## Background

MOSC1 (MOCO sulphurase C-terminal domain containing 1), also known as MARC1, is a 337 amino acid mitochondrial protein that is thought to function as an oxidoreductase. Existing as three alternatively spliced isoforms, MOSC1 contains one MOSC domain and binds molybdenum as a cofactor. The gene encoding MOSC1 maps to human chromosome 1, which spans 260 million base pairs, contains over 3,000 genes and comprises nearly 8% of the human genome.?

Note: This product is for in vitro research use only