

ELP3 Antibody

Catalog No: #37392

Orders: order@signalwayantibody.comSupport: tech@signalwayantibody.com

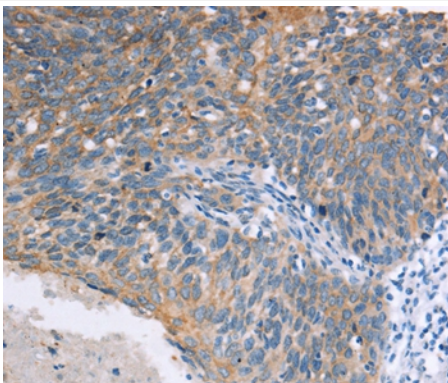
Description

Product Name	ELP3 Antibody
Host Species	Rabbit
Clonality	Polyclonal
Purification	Antigen affinity purification.
Applications	IHC
Species Reactivity	Hu Ms
Specificity	The antibody detects endogenous levels of total ELP3 protein.
Immunogen Type	Peptide
Immunogen Description	Synthetic peptide corresponding to residues near the C terminal of human elongator acetyltransferase complex subunit 3
Target Name	ELP3
Other Names	KAT9
Accession No.	Swiss-Prot#: Q9H9T3NCBI Gene ID: 55140Gene Accsson: NP_060561
Uniprot	Q9H9T3
GeneID	55140;
Concentration	1.1mg/ml
Formulation	Rabbit IgG in pH7.4 PBS, 0.05% NaN ₃ , 40% Glycerol.
Storage	Store at -20°C

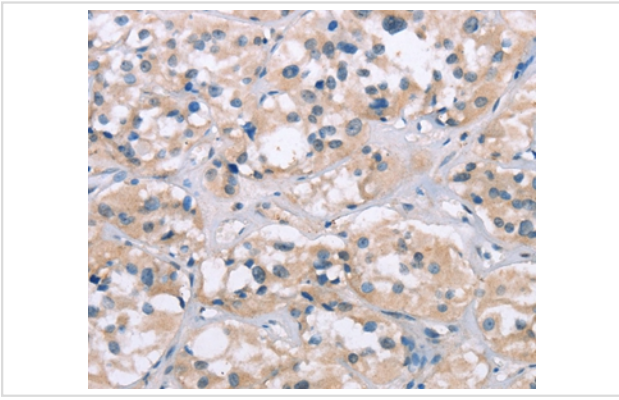
Application Details

Immunohistochemistry: 1:15-1:50

Images



Immunohistochemical analysis of paraffin-embedded Human cervical cancer tissue using #37392 at dilution 1/15.



Immunohistochemical analysis of paraffin-embedded Human thyroid cancer tissue using #37392 at dilution 1/15.

Background

ELP3 is the catalytic subunit of the histone acetyltransferase elongator complex, which contributes to transcript elongation and also regulates the maturation of projection neurons. Catalytic histone acetyltransferase subunit of the RNA polymerase II elongator complex, which is a component of the RNA polymerase II (Pol II) holoenzyme and is involved in transcriptional elongation. Elongator may play a role in chromatin remodeling and is involved in acetylation of histones H3 and probably H4. May also have a methyltransferase activity. Involved in cell migration.

Note: This product is for in vitro research use only