

S100B Antibody

Catalog No: #37396

Orders: order@signalwayantibody.comSupport: tech@signalwayantibody.com

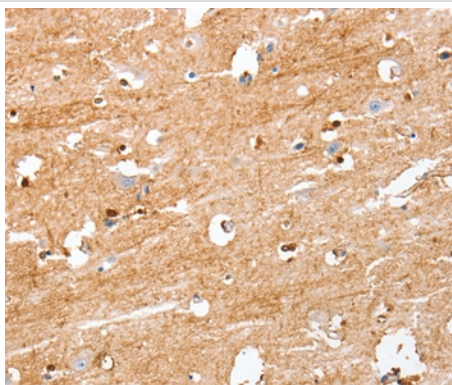
Description

Product Name	S100B Antibody
Host Species	Rabbit
Clonality	Polyclonal
Purification	Antigen affinity purification.
Applications	IHC
Species Reactivity	Human Mouse Rat
Specificity	The antibody detects endogenous levels of total S100B protein.
Immunogen Type	Peptide
Immunogen Description	Synthetic peptide of human S100B
Target Name	S100B
Other Names	NEF; S100; S100-B; S100beta
Accession No.	Swiss-Prot#: P04271NCBI Gene ID: 6285Gene Accssion: NP_006263
Uniprot	P04271
GeneID	6285;
Concentration	0.3 mg/ml
Formulation	Rabbit IgG in pH7.4 PBS, 0.05% NaN ₃ , 40% Glycerol.
Storage	Store at -20°C

Application Details

Immunohistochemistry: 1:25-1:100

Images



Immunohistochemical analysis of paraffin-embedded Human brain tissue using #37396 at dilution 1/50.

Background

The protein encoded by this gene is a member of the S100 family of proteins containing 2 EF-hand calcium-binding motifs. S100 proteins are localized in the cytoplasm and/or nucleus of a wide range of cells, and involved in the regulation of a number of cellular processes such as cell cycle progression and differentiation. S100 genes include at least 13 members which are located as a cluster on chromosome 1q21; however, this gene is located at 21q22.3. This protein may function in Neurite extension, proliferation of melanoma cells, stimulation of Ca²⁺ fluxes, inhibition of

PKC-mediated phosphorylation, astrocytosis and axonal proliferation, and inhibition of microtubule assembly. Chromosomal rearrangements and altered expression of this gene have been implicated in several neurological, neoplastic, and other types of diseases, including Alzheimer's disease, Down's syndrome, epilepsy, amyotrophic lateral sclerosis, melanoma, and type I diabetes.

Note: This product is for in vitro research use only