

ASCC2 Antibody

Catalog No: #37399

Orders: order@signalwayantibody.comSupport: tech@signalwayantibody.com

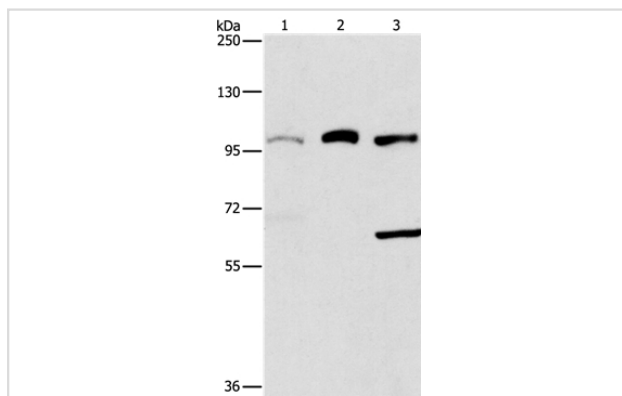
Description

Product Name	ASCC2 Antibody
Host Species	Rabbit
Clonality	Polyclonal
Purification	Antigen affinity purification.
Applications	WB
Species Reactivity	Hu Ms
Specificity	The antibody detects endogenous levels of total ASCC2 protein.
Immunogen Type	Peptide
Immunogen Description	Synthetic peptide corresponding to a region derived from internal residues of human activating signal cointegrator 1 complex subunit 2
Target Name	ASCC2
Other Names	p100; ASC1p100
Accession No.	Swiss-Prot#: Q9H1I8NCBI Gene ID: 84164Gene Accssion: NP_115580
Uniprot	Q9H1I8
GeneID	84164;
SDS-PAGE MW	86kd
Concentration	2.2mg/ml
Formulation	Rabbit IgG in pH7.4 PBS, 0.05% NaN ₃ , 40% Glycerol.
Storage	Store at -20°C

Application Details

Western blotting: 1:200-1:1000

Images



Gel: 6%SDS-PAGE
 Lysates (from left to right): 293T, A431 and hepG2 cell
 Amount of lysate: 40ug per lane
 Primary antibody: 1/367 dilution
 Secondary antibody dilution: 1/8000
 Exposure time: 20 seconds

Background

ASCC2 (activating signal cointegrator 1 complex subunit 2), also known as ASC1P100, is a 757 amino acid protein that is ubiquitously expressed and

contains one CUE domain. The gene encoding ASCC2 maps to human chromosome 22, which houses over 500 genes and is the second smallest human chromosome. Mutations in several of the genes that map to chromosome 22 are involved in the development of Phelan-McDermid syndrome, Neurofibromatosis type 2, autism and schizophrenia. Additionally, translocations between chromosomes 9 and 22 may lead to the formation of the Philadelphia Chromosome and the subsequent production of the novel fusion protein BCR-Abl, a potent cell proliferation activator found in several types of leukemias.

Note: This product is for in vitro research use only