

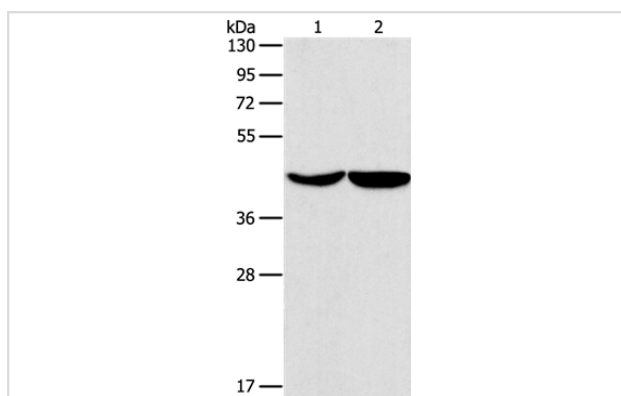
Description

Product Name	ASPN Antibody
Host Species	Rabbit
Clonality	Polyclonal
Purification	Antigen affinity purification.
Applications	WB
Species Reactivity	Hu
Specificity	The antibody detects endogenous levels of total ASPN protein.
Immunogen Type	Peptide
Immunogen Description	Synthetic peptide corresponding to a region derived from internal residues of human asporin
Target Name	ASPN
Other Names	OS3; PLAP1; PLAP-1; SLRR1C
Accession No.	Swiss-Prot#: Q9BXN1NCBI Gene ID: 54829Gene Accsion: NP_001180264
Uniprot	Q9BXN1
GeneID	54829;
SDS-PAGE MW	43kd
Concentration	2.2mg/ml
Formulation	Rabbit IgG in pH7.4 PBS, 0.05% NaN ₃ , 40% Glycerol.
Storage	Store at -20°C

Application Details

Western blotting: 1:500-1:2000

Images



Gel: 10%SDS-PAGE
 Lysates (from left to right): HeLa and hepG2 cell
 Amount of lysate: 40ug per lane
 Primary antibody: 1/550 dilution
 Secondary antibody dilution: 1/8000
 Exposure time: 40 seconds

Background

This gene encodes a cartilage extracellular protein that is member of the small leucine-rich proteoglycan family. The encoded protein may regulate chondrogenesis by inhibiting transforming growth factor-beta 1-induced gene expression in cartilage. This protein also binds collagen and calcium and

may induce collagen mineralization. Polymorphisms in the aspartic acid repeat region of this gene are associated with a susceptibility to osteoarthritis. Alternate splicing results in multiple transcript variants.

Note: This product is for in vitro research use only